

# Final plans for additions and renovations to **Van Meter School**

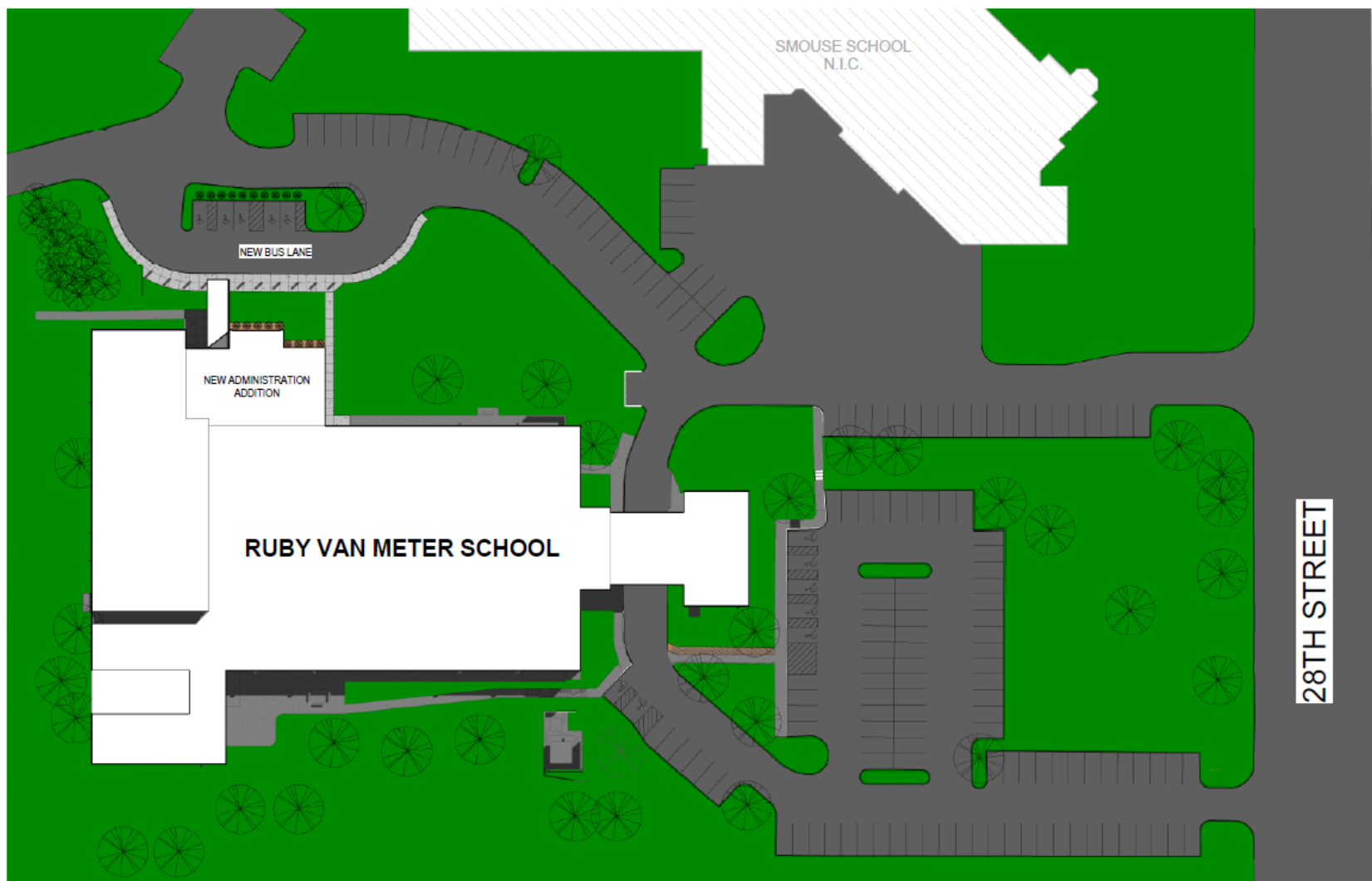
**A continuation**

Board Meeting  
November 3, 2015



Think. Learn. **Grow.**

[www.dmschools.org](http://www.dmschools.org)



RUBY VAN METER SCHOOL | ADDITION  
SITE PLAN (BASE BID)



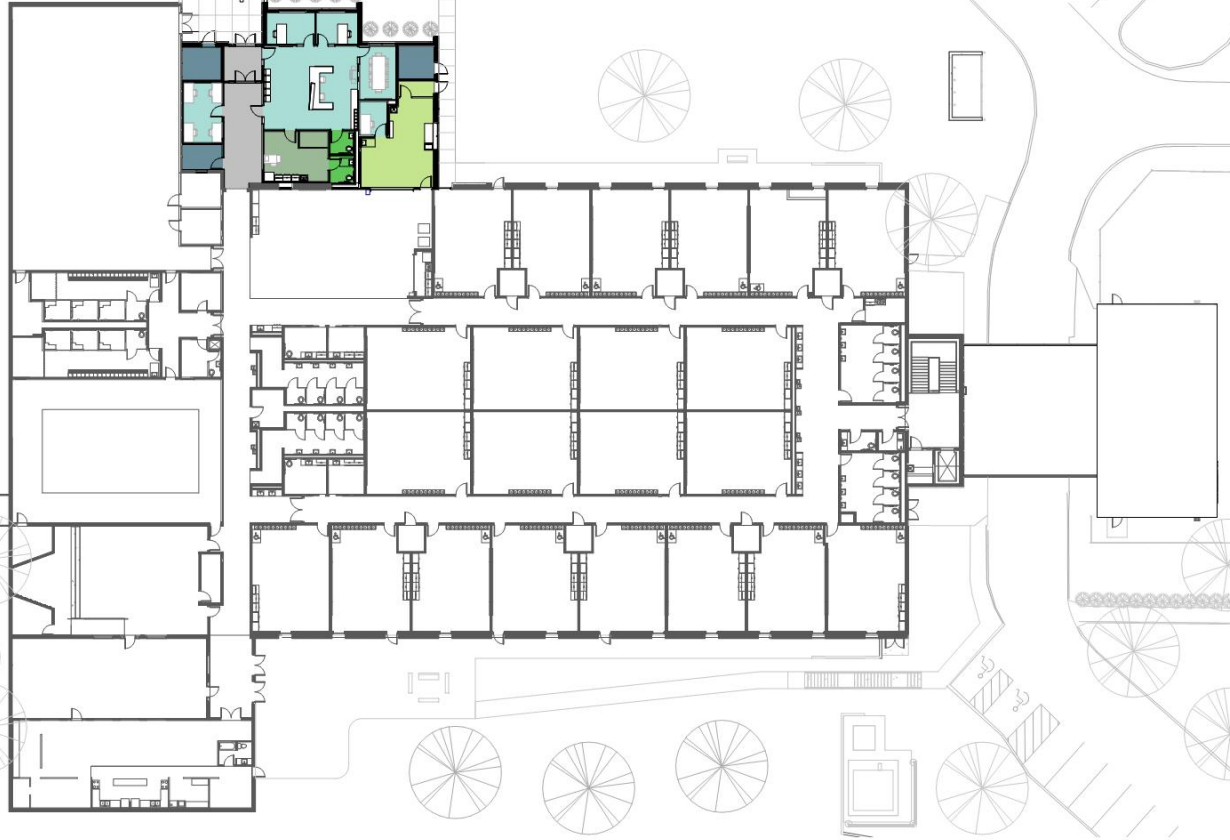
WELLS  
+ associates



NEW BUS DRIVE

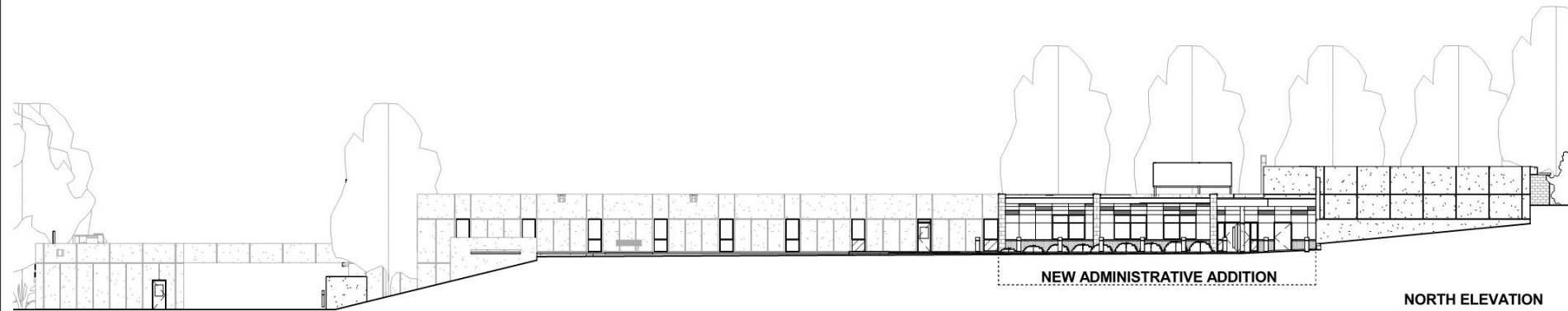
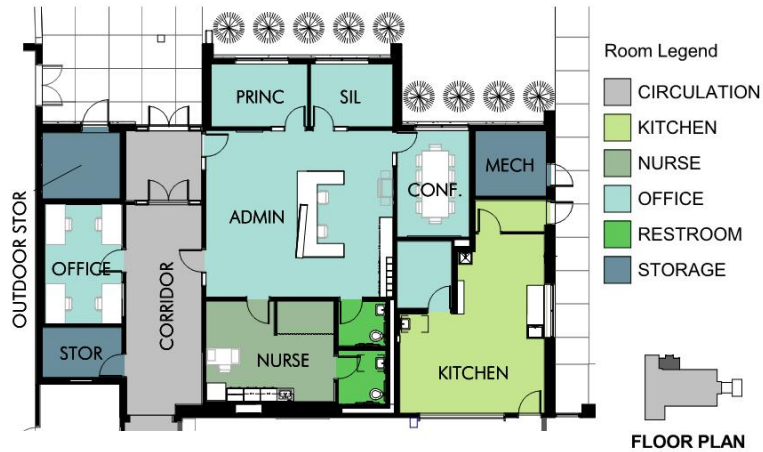
Room Legend

-  CIRCULATION
-  KITCHEN
-  NURSE
-  OFFICE
-  RESTROOM
-  STORAGE



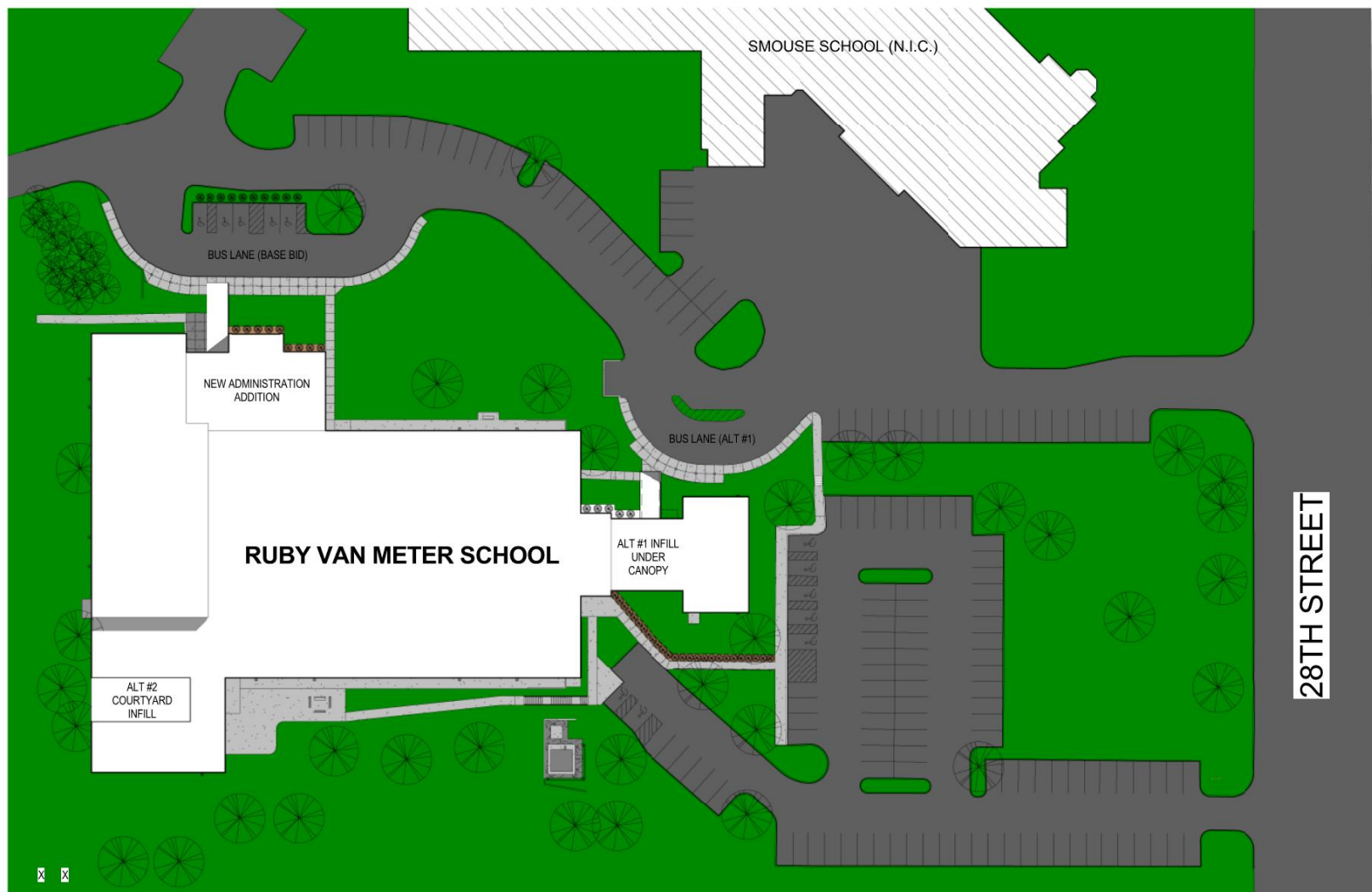
RUBY VAN METER SCHOOL | ADDITION

FIRST FLOOR PLAN (BASE BID)



# RUBY VAN METER SCHOOL | ADDITION ADMINISTRATIVE ADDITION (BASE BID)



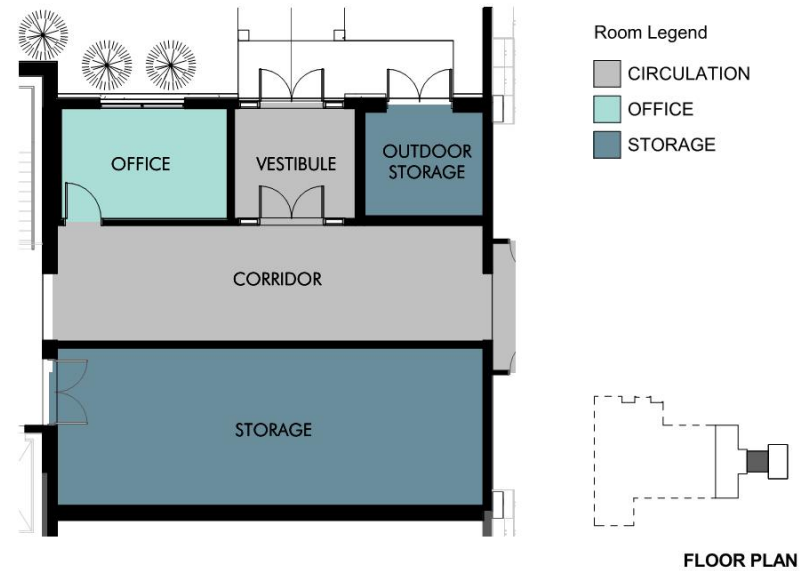


# RUBY VAN METER SCHOOL | ADDITION SITE PLAN (ALTERNATES #1 AND #2)





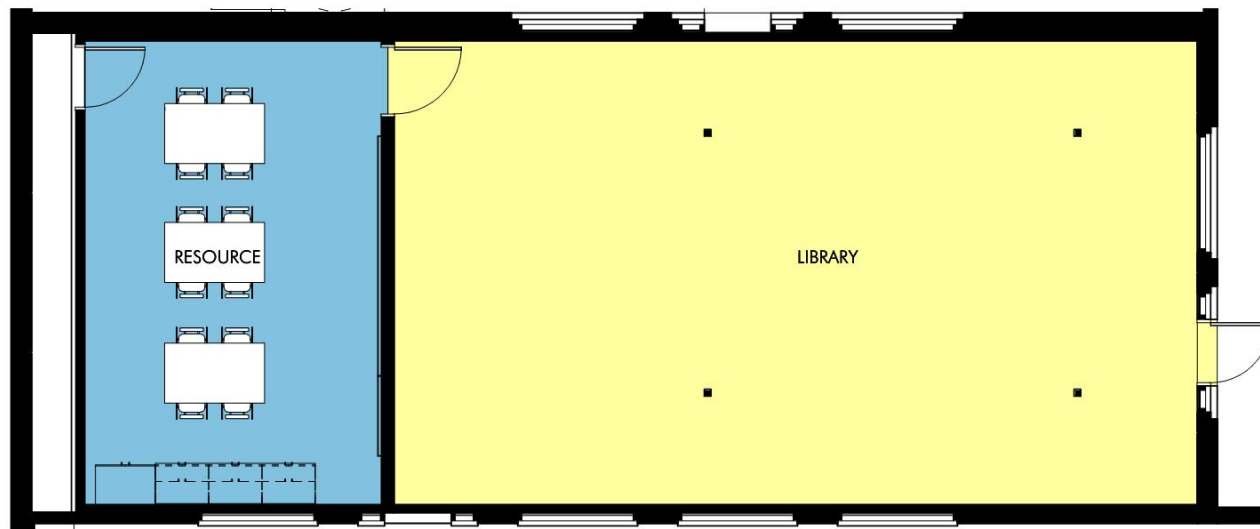
ALTERNATE #1 ENTRY



# RUBY VAN METER SCHOOL | ADDITION

## ALTERNATE #1





Room Legend

- CLASSROOM
- LIBRARY



## RUBY VAN METER SCHOOL | ADDITION

### ALTERNATE #2

# Project Highlights

- Security upgrades
- Creating a “front door”
- Elimination of open classrooms
- More changing rooms
- Improved accessibility for students
- Mechanical/electrical improvements for improved efficiency
- Increased natural lighting



# Timeline

- November 3, 2015 – Board review and approval of final plans
- June 3, 2016 – Construction start
- August 15, 2015 – Substantial Completion

# Project budget

\$1,225,000



# QUESTIONS AND COMMENTS

<http://www.dmschools.org/wp-content/uploads/2011/12/Van-Meter-Final-plans.pdf>



Think. Learn. **Grow.**

[www.dmschools.org](http://www.dmschools.org)