

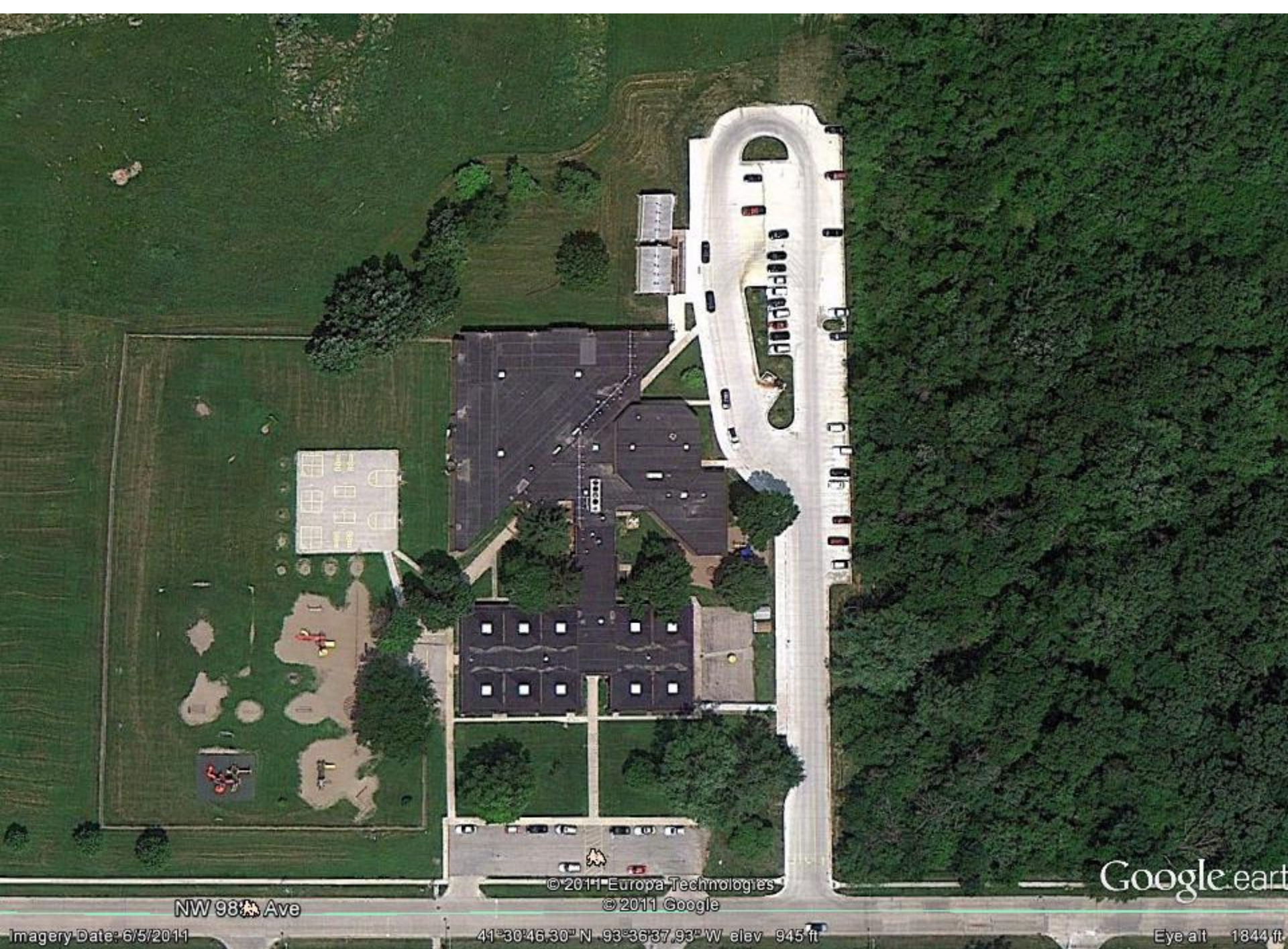


Studebaker Elementary School

Additions and Renovations

Final Plans

February 21, 2012



NW 98th Ave

© 2011 Europa Technologies
© 2011 Google

Google earth

Imagery Date: 6/5/2011

41°30'46.30" N 93°36'37.93" W elev 945 ft

Eye alt 1844 ft

[illegible]NEW CLASSROOM
ADDITION

GRAPHIC SCALE

1 inch = 20 ft. (IN FEET)



Site Plan

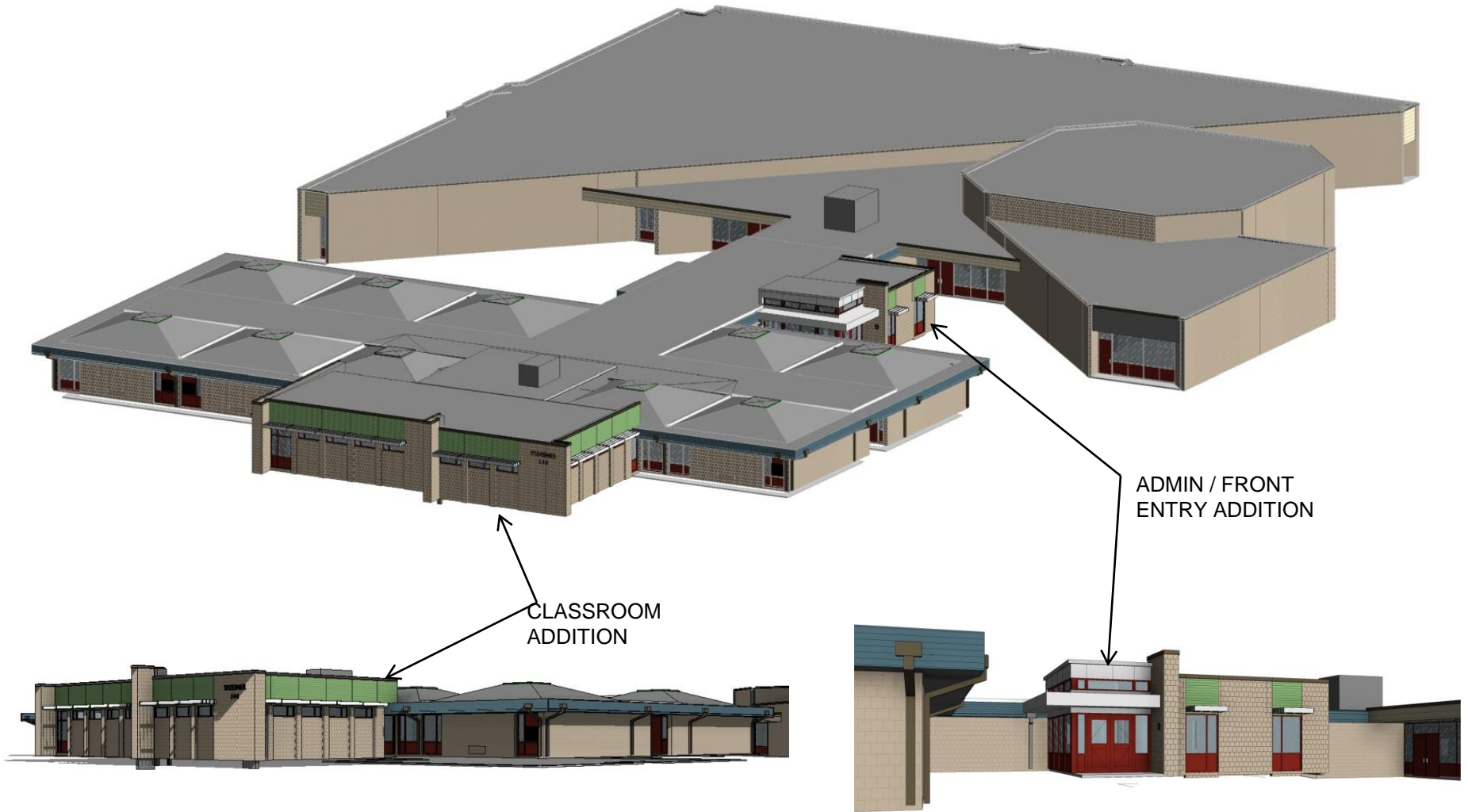


Proposed classroom
addition



Temporary partitions between classrooms. Considerable noise transfer between classrooms which can cause disruptions or distractions.







Temporary classrooms on the north side of the school. Safety/security concern as well as comfort of students during inclement weather.



SOUTH ELEVATION
CLASSROOM ADDITION



EAST ELEVATION
ADMIN/FRONT ENTRY ADDITION



Project Features

“Students First”

- Vastly improved classroom layout and finishes
- Security and classroom environment improvements
 - Students would not have to leave the school for classes
- Technology upgrades
 - Faster internet
 - Improved wireless connections
- Acoustic improvements
 - Reduced classroom disruptions “walls”
 - Sound enhancement systems for classrooms
- Energy efficiency
- Miscellaneous : new clock and P.A. systems

Studebaker Elementary Project Budget

\$5,108,926

Five-year plan....Ten-year vision

Timeline

January 10, 2012 – Preliminary plans

February 21, 2012 – Board approval of plans

April 3, 2012 – Award of bids

April 2012 – Construction start

Fall 2012 - Completion

