

# Phillips Elementary

# Final Plans

## Three classroom addition

Board Meeting

November 15, 2016

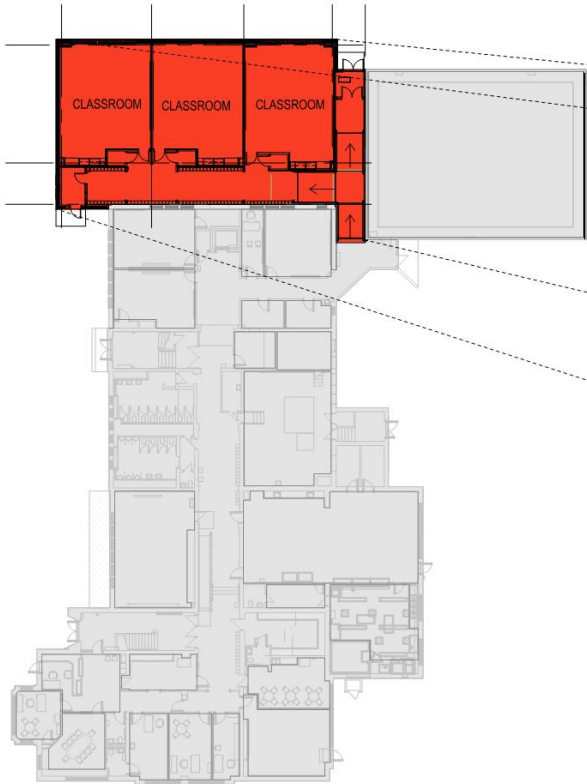


Think. Learn. **Grow.**

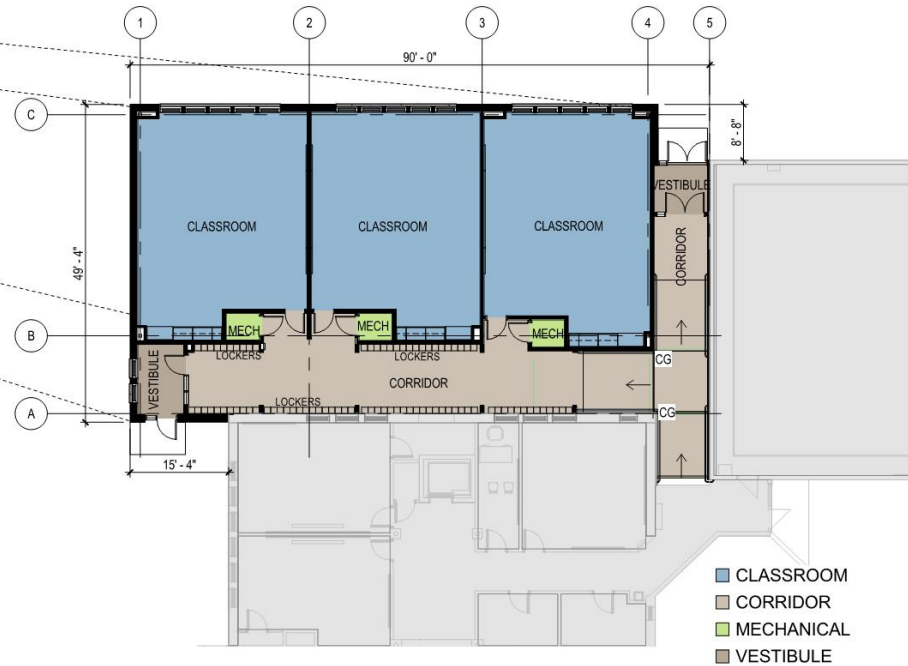
[www.dmschools.org](http://www.dmschools.org)



# Floor plan



 **OVERALL FLOOR PLAN**  
SCALE: 1" = 30'-0"  
NORTH



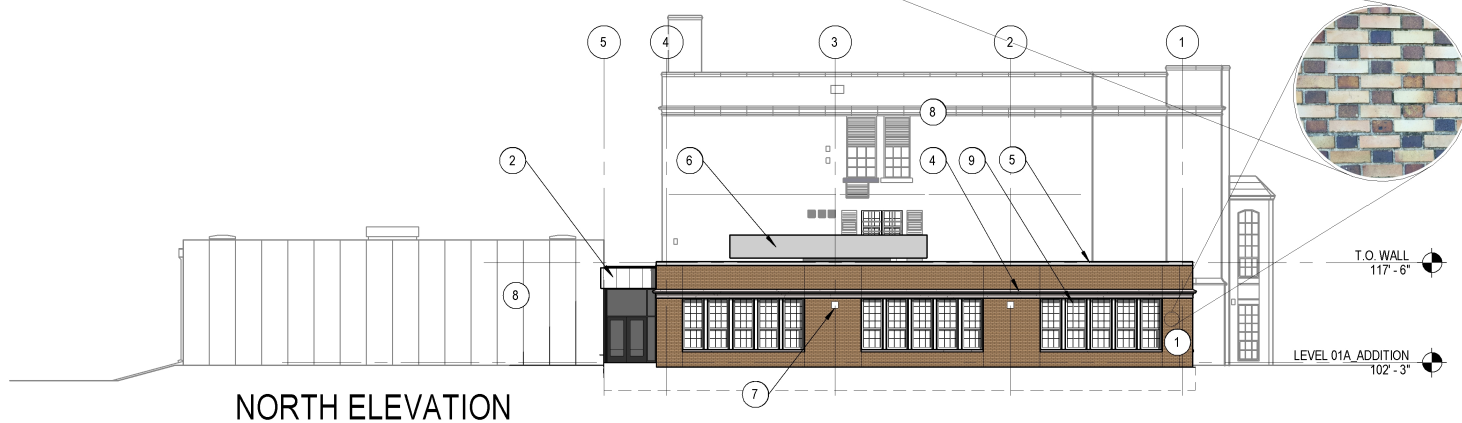
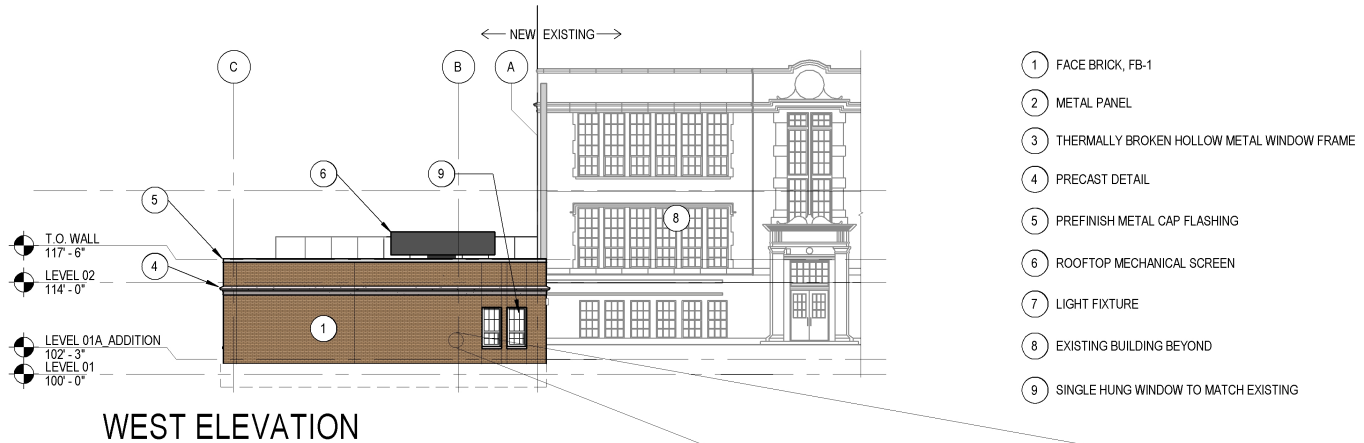
 **ENLARGED FLOOR PLAN**  
SCALE: 1/16" = 1'-0"  
NORTH



## PHILLIPS ELEMENTARY SCHOOL CLASSROOM ADDITION



# Elevations



## PHILLIPS ELEMENTARY SCHOOL CLASSROOM ADDITION



# Highlights of project

- Ability of more neighborhood students attending their neighborhood school.
- Classroom expansion to full three section building.
- ADA improvements.
- Great new learning spaces.

# Timeline

- November 15, 2016 – Board review and approval of final plans
- April 15, 2017 – Construction start
- August 15, 2017 – Completion

Project budget – Estimated \$1,500,000

Funding – Year 2 of SWP plan