

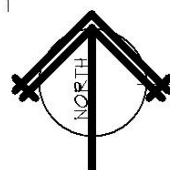
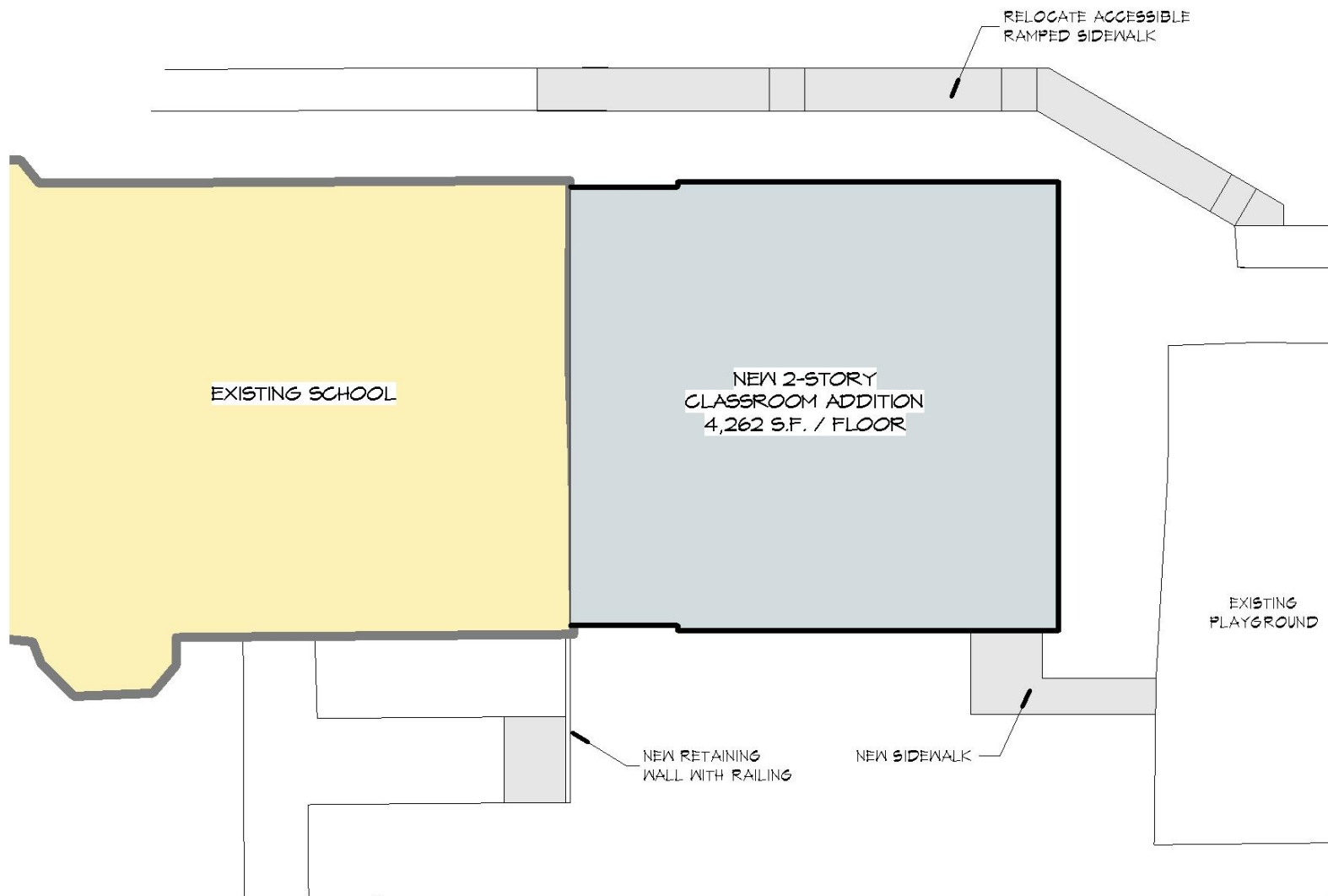
Final plans for addition to **Perkins Elementary**

Board Meeting
October 7, 2014



Think. Learn. **Grow.**

www.dmschools.org



PARTIAL SITE PLAN

1" = 20'-0"



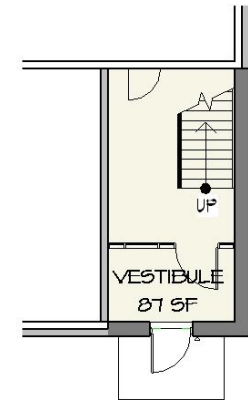
LARRISON & ASSOCIATES
architects

© 2014

PERKINS ELEMENTARY SCHOOL






10/1/2014 11:03:48 AM

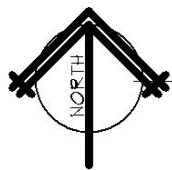
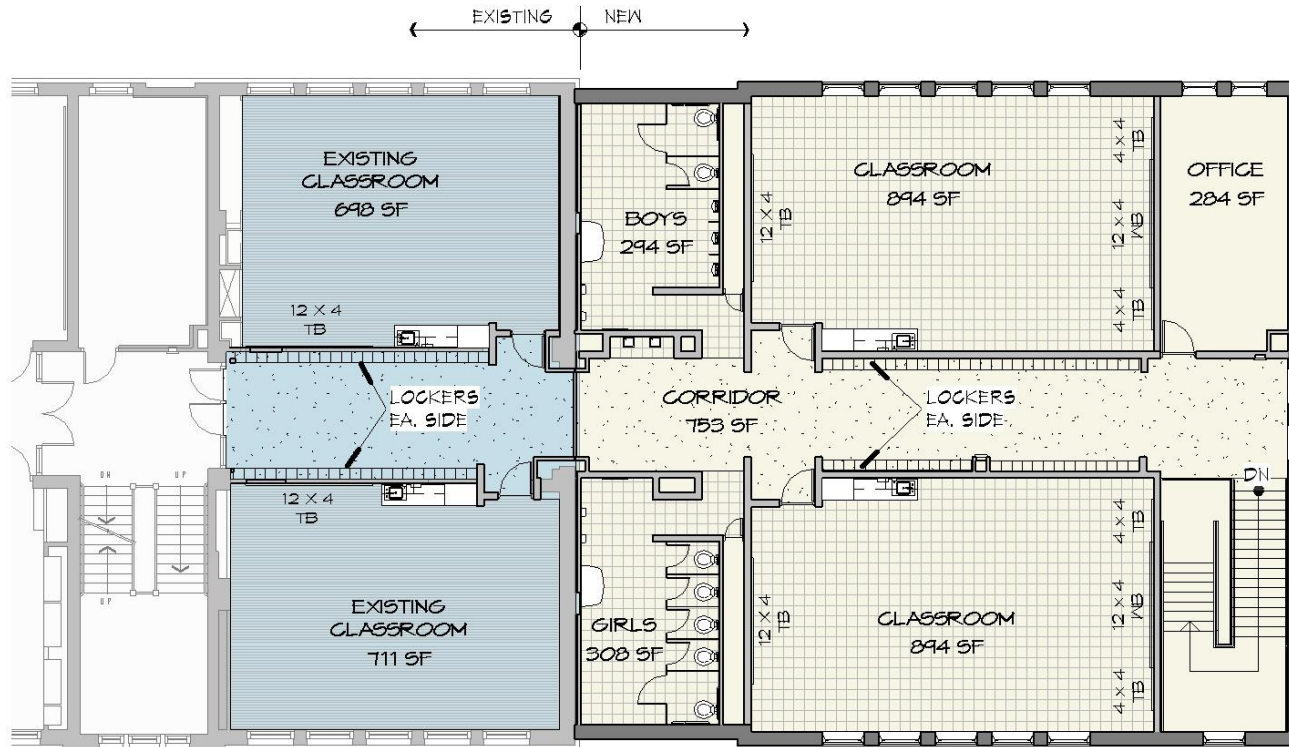


LOWER EXIT

$$1/16'' = 1'-0''$$

-  EXISTING
 REMODEL
 NEW ADDITION





SECOND FLOOR PLAN

1/16" = 1'-0"

LEGEND

- EXISTING
- REMODEL
- NEW ADDITION

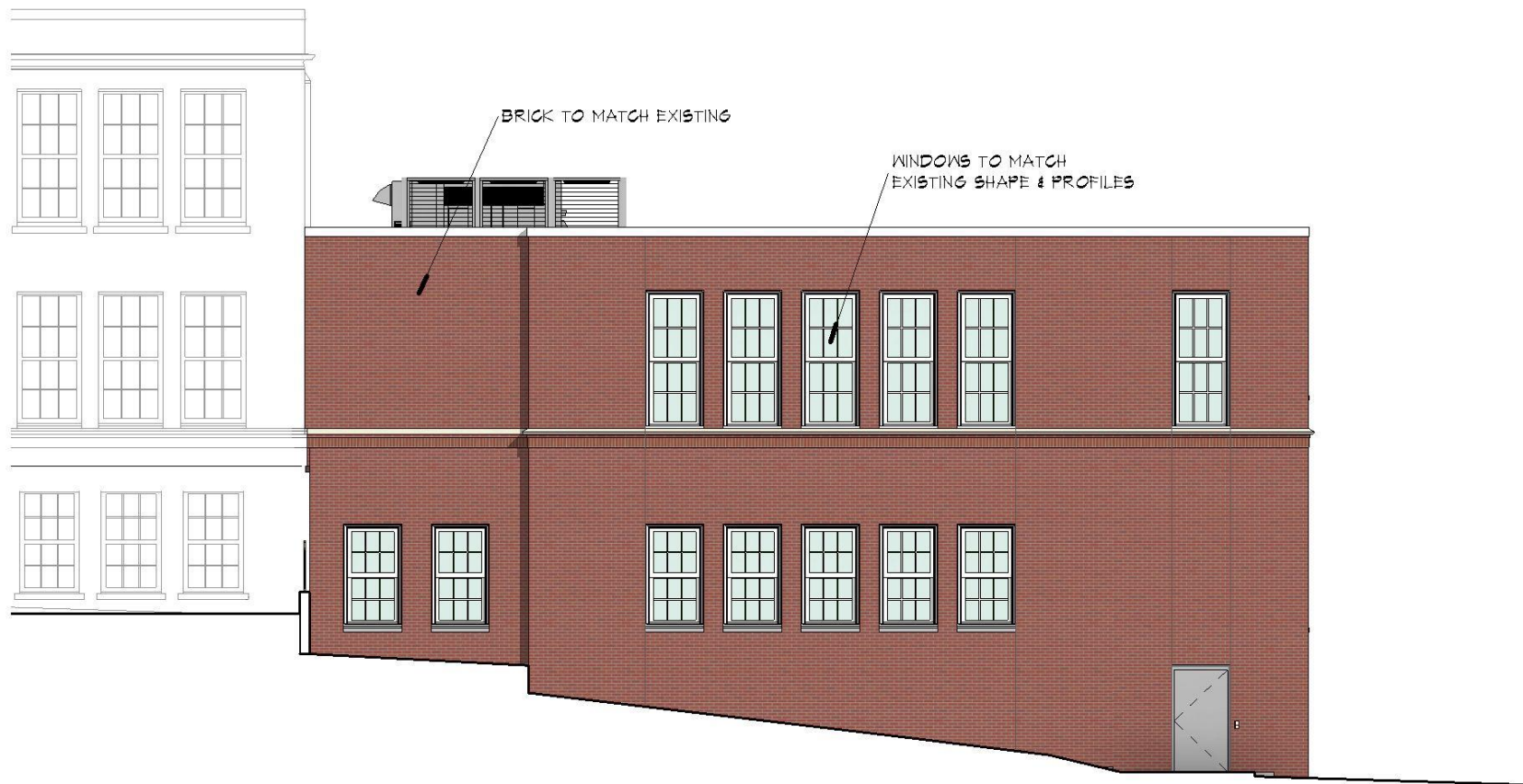


LARRISON & ASSOCIATES
architects

© 2014

PERKINS ELEMENTARY SCHOOL





South Elevation

$3/32" = 1'-0"$



LARRISON & ASSOCIATES
architects

© 2014

PERKINS ELEMENTARY SCHOOL



9/30/2014 4:00:54 PM



East Elevation

$\frac{3}{32}'' = 1'-0''$

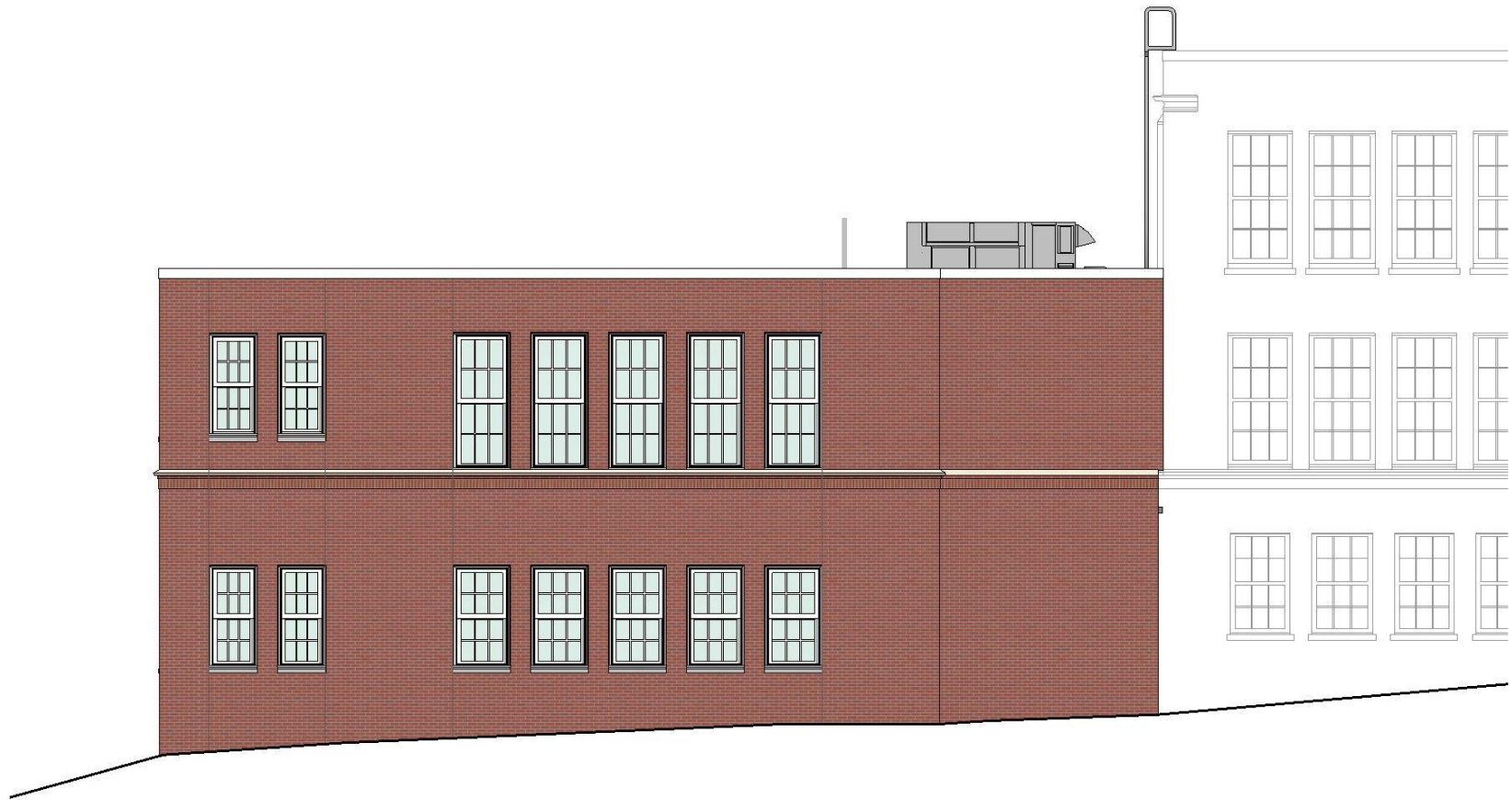


LARRISON & ASSOCIATES
architects

© 2014

PERKINS ELEMENTARY SCHOOL





North Elevation

$3/32" = 1'-0"$



LARRISON & ASSOCIATES
architects

© 2014

PERKINS ELEMENTARY SCHOOL



Project Highlights

- Security upgrades
- Additional student restrooms
- Additional student lockers
- Providing more opportunities for neighborhood students

Timeline

- October 7, 2014– Board review and approval of final plans
- December 9, 2014 – Award of bid
- April 1, 2015 – Construction start
- August 15, 2015 – Substantial completion

Project budget

\$1,725,000



QUESTIONS AND COMMENTS



Think. Learn. **Grow.**

www.dmschools.org