

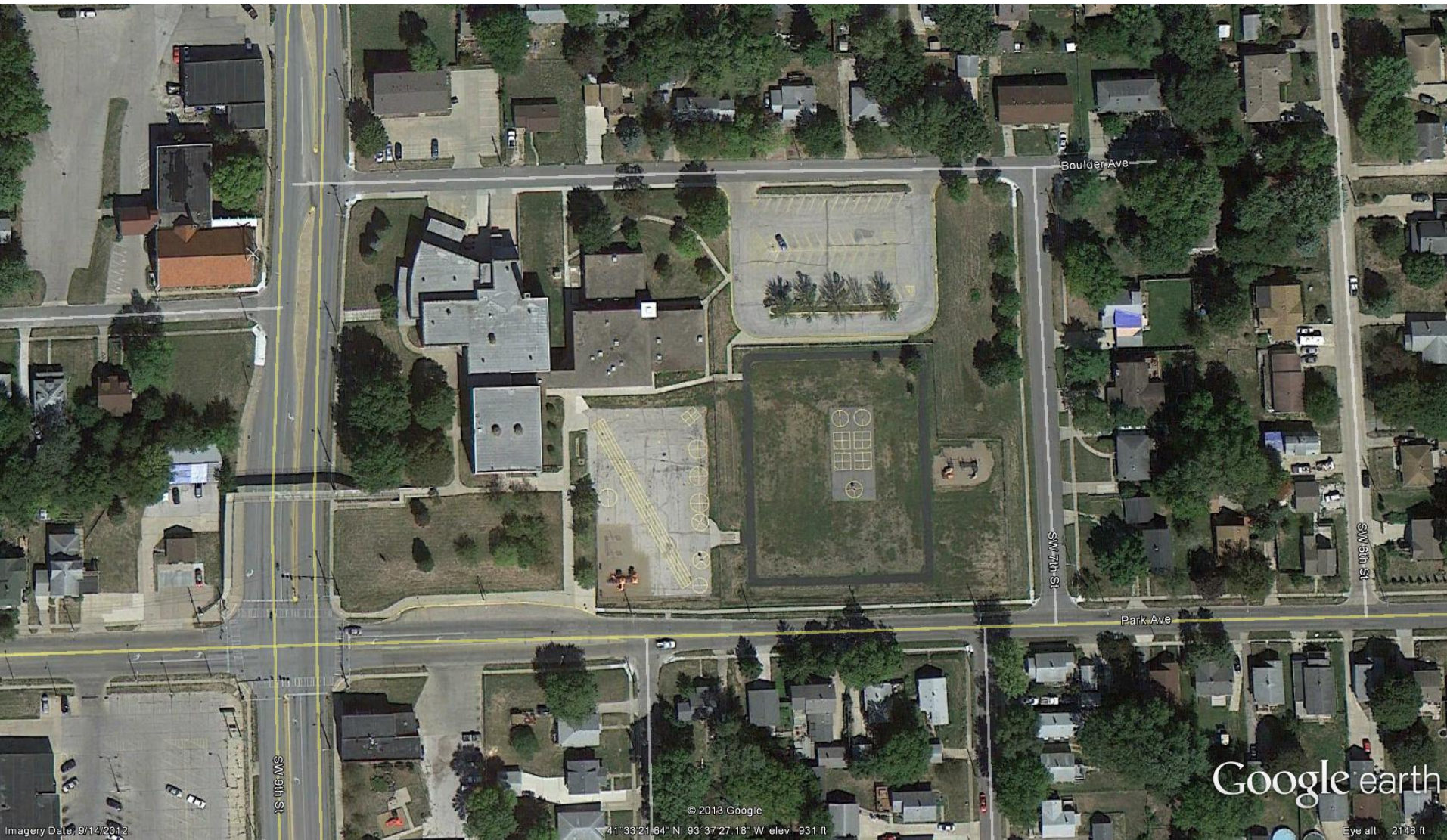
Final plans for addition and renovations to **Park Avenue Elementary School**

Board Meeting
February 5, 2013



Think. Learn. **Grow.**

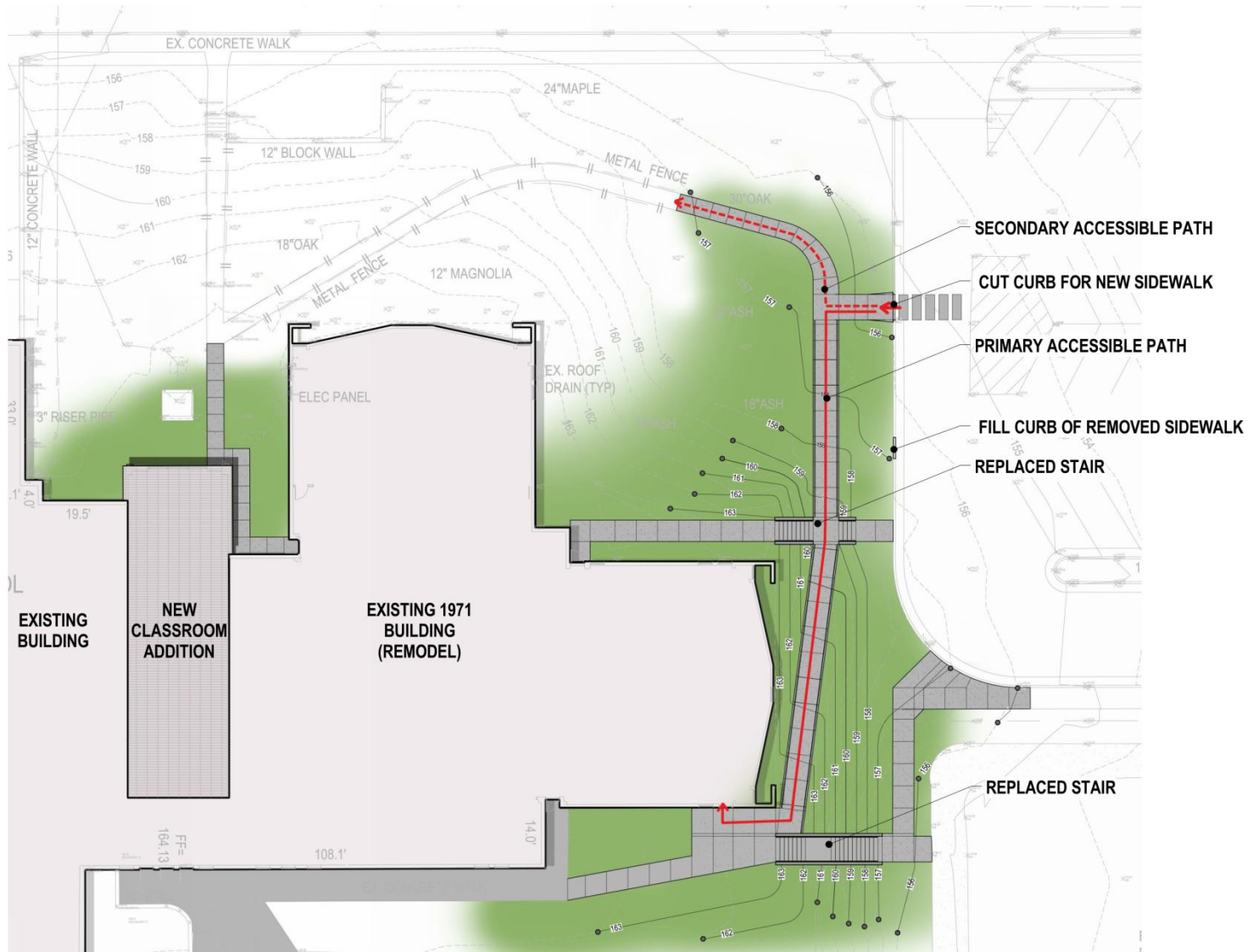
www.dmschools.org



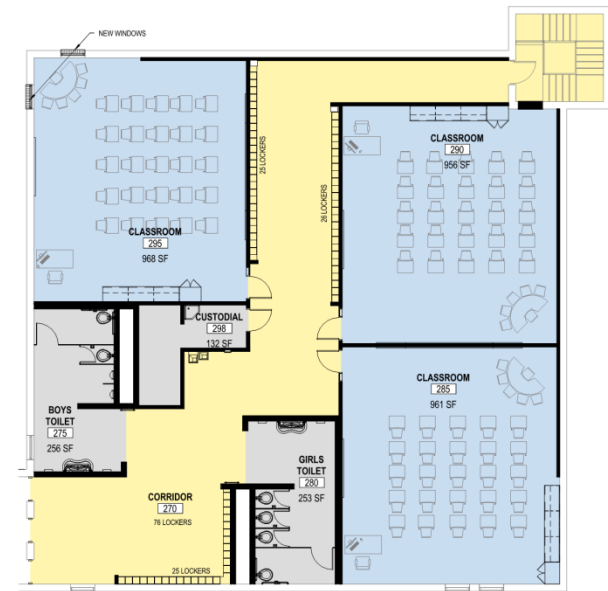
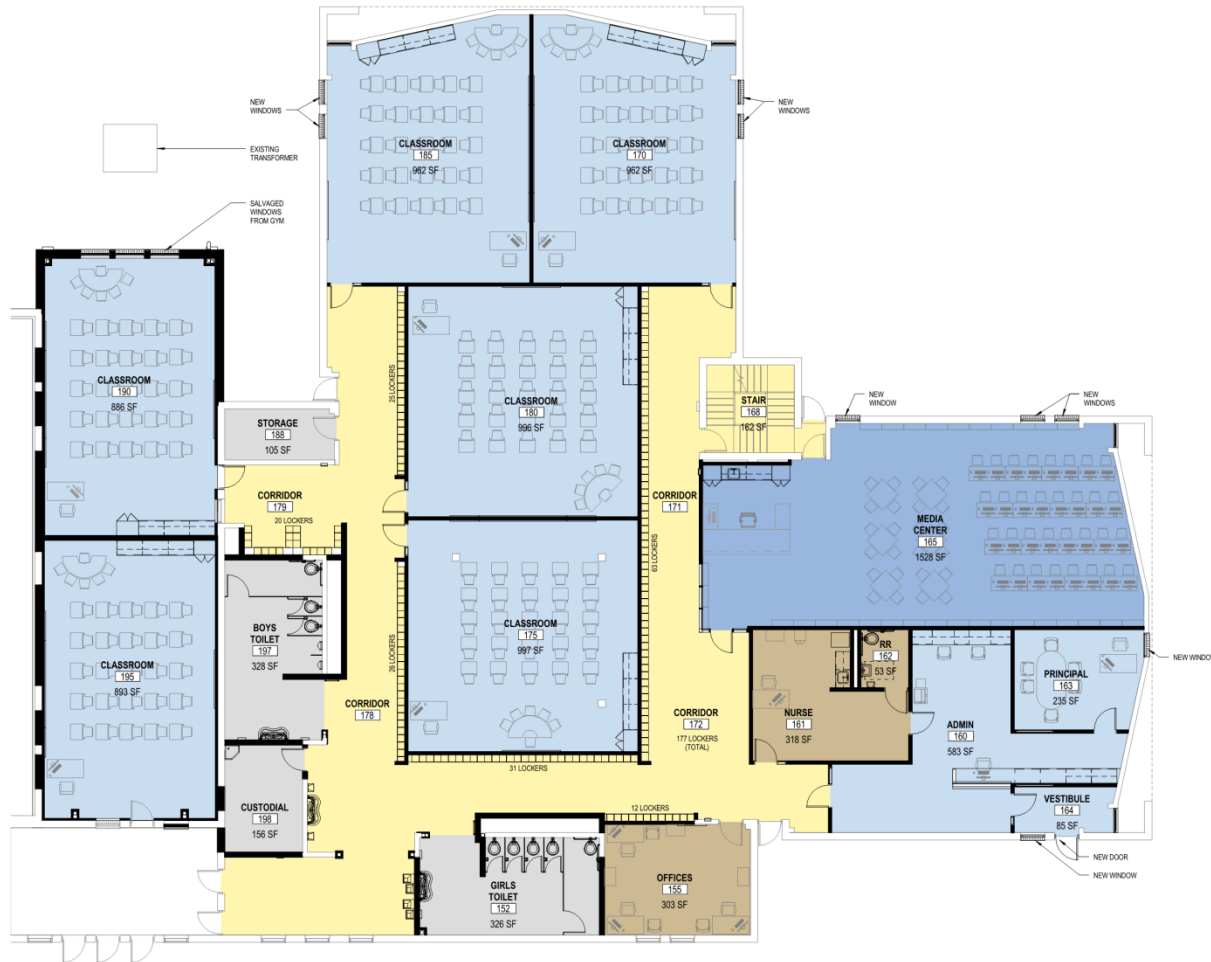
Imagery Date: 9/14/2012

© 2013 Google
41°33'21.64" N 93°37'27.18" W elev 931 ft

Eye alt 2138 ft

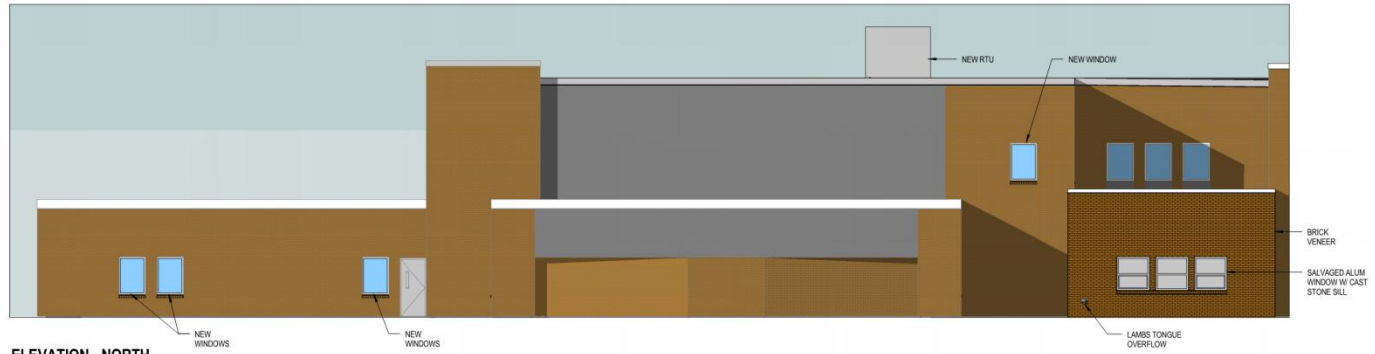


Park Avenue Elementary School



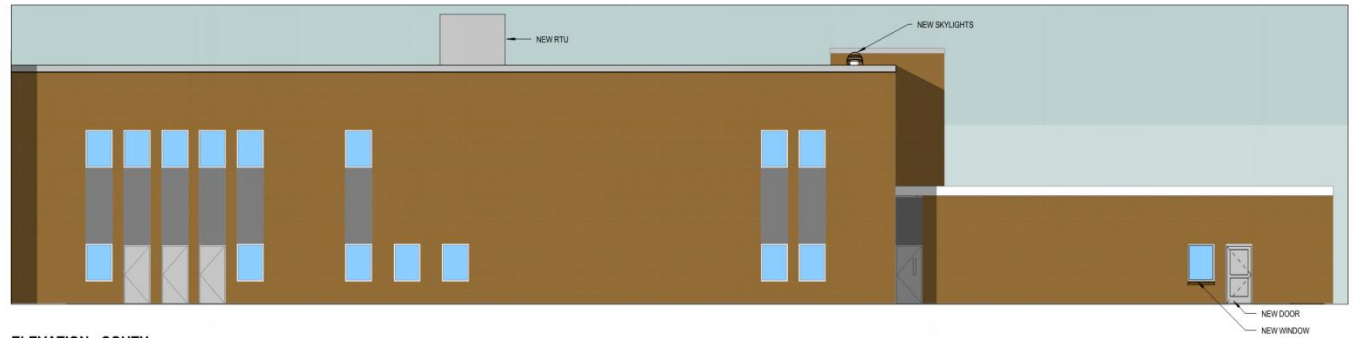
Floor Plans

Park Avenue Elementary School



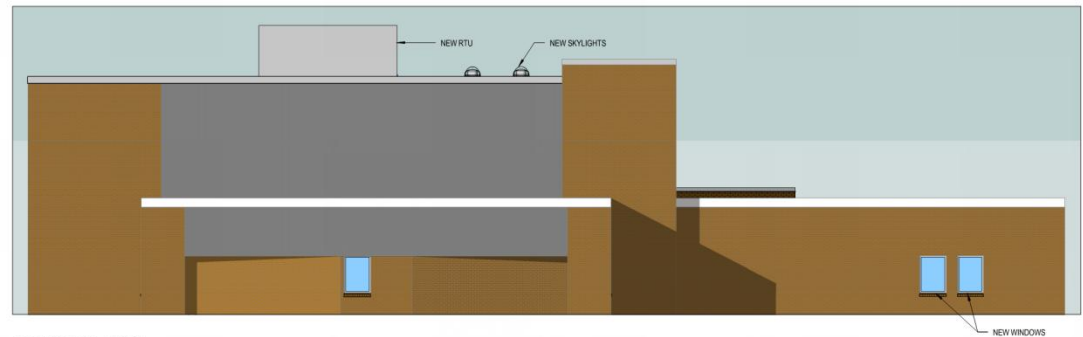
ELEVATION - NORTH

1/8" = 1'-0"



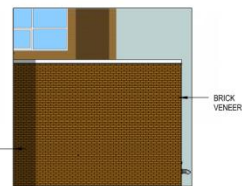
ELEVATION - SOUTH

1/8" = 1'-0"



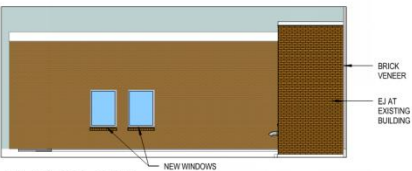
ELEVATION - EAST

1/8" = 1'-0"



ELEVATION - ADDITION EAST

1/8" = 1'-0"



ELEVATION - WEST

1/8" = 1'-0"

Site Plan

What will be different

- Front entrance will be more secure and welcoming
- With self contained classrooms there will be better learning environment
- Mechanical/electrical system upgrades
- ADA improvements
- Technology enhancements

Timeline

- February 5, 2013– Board review and approval of final plans
- March 12, 2013 – Award of bid
- April 1, 2013 – Construction start
- August 18, 2013 – Substantial completion

Project budget

\$2,400,000



Questions?



Think. Learn. **Grow.**

www.dmschools.org