

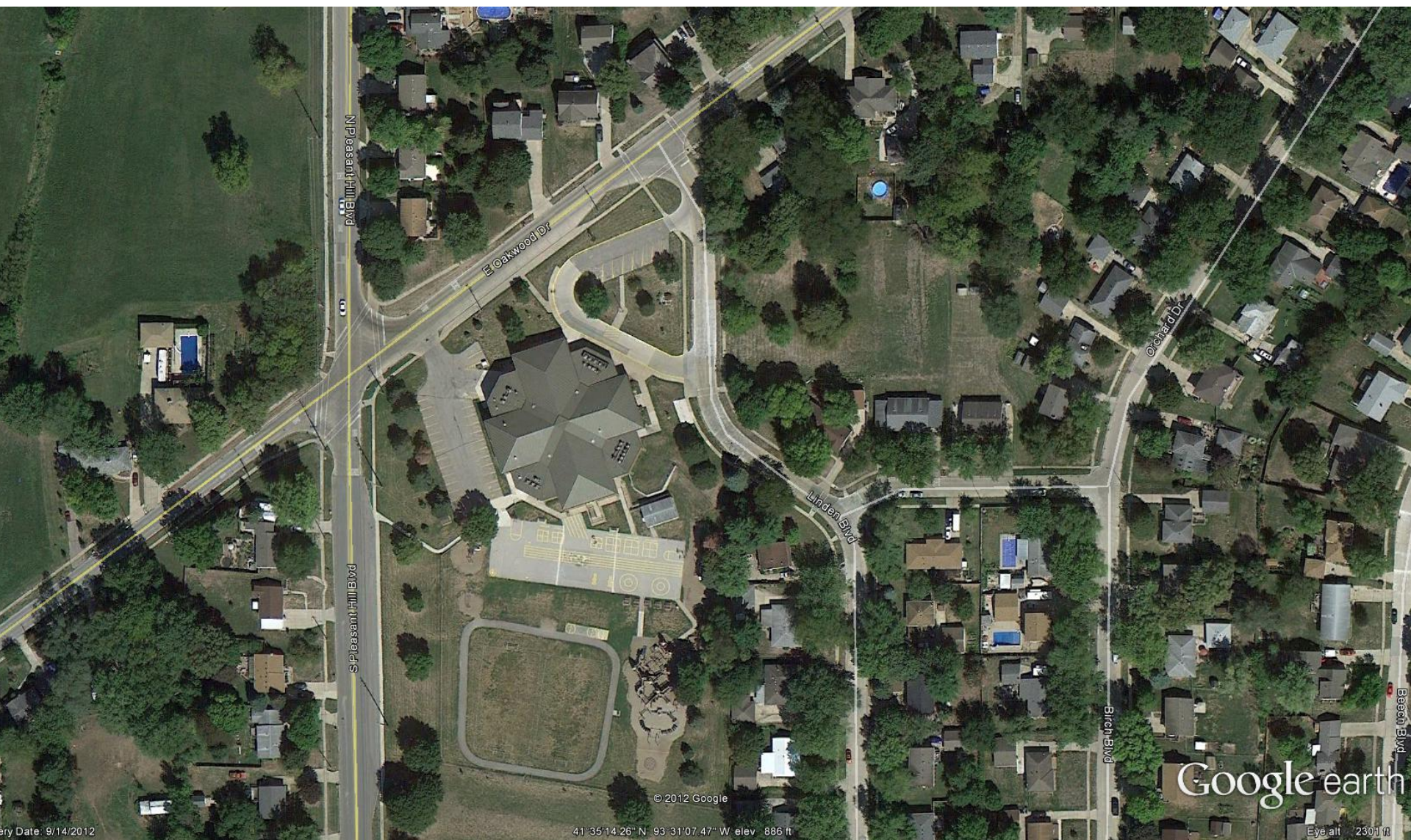
Final plans for addition and renovations to **Pleasant Hill Elementary School**

Board Meeting
December 11, 2012



Think. Learn. **Grow.**

www.dmschools.org



ery Date: 9/14/2012

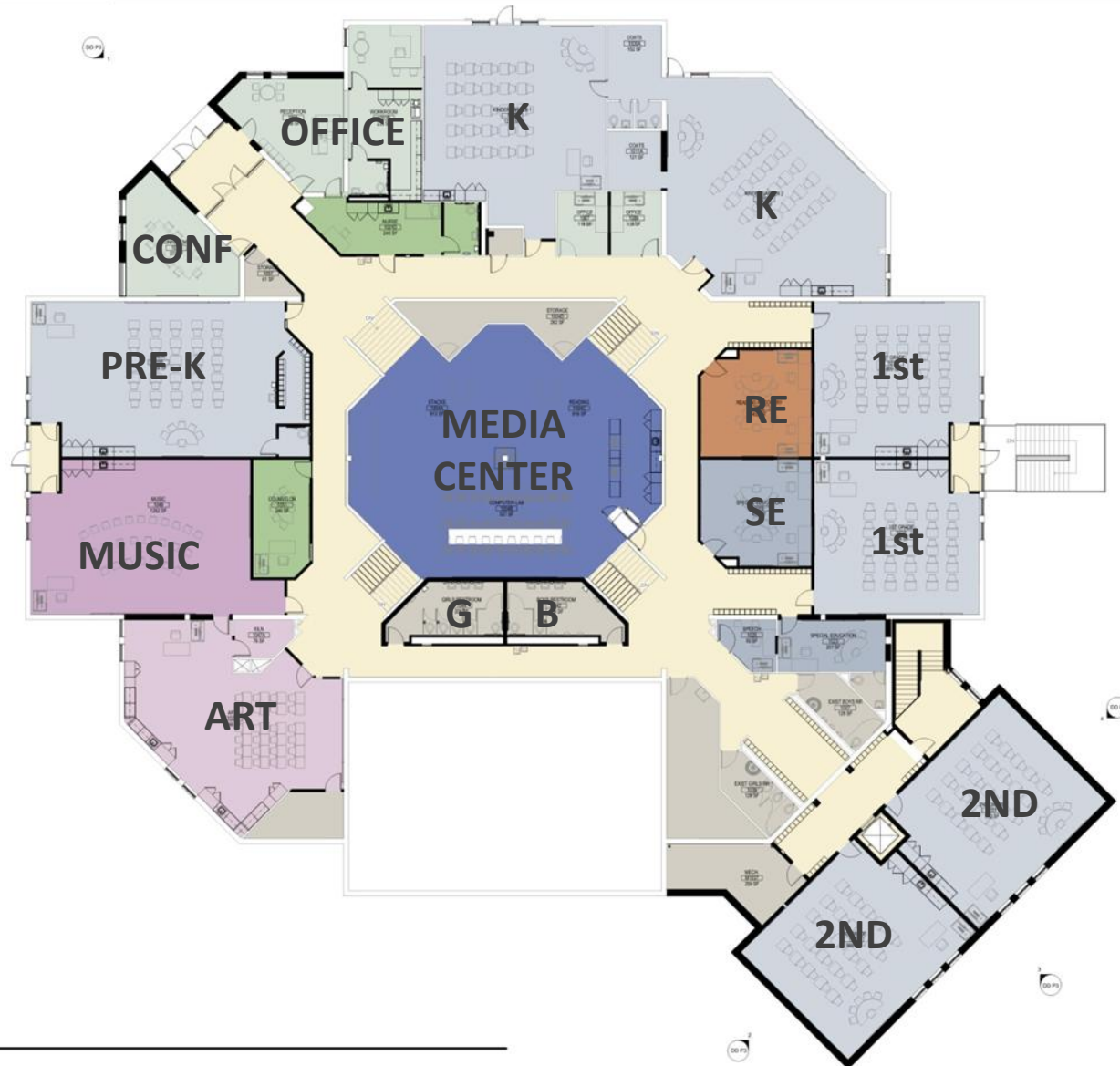
41°35'14.26" N 93°31'07.47" W elev 886 ft

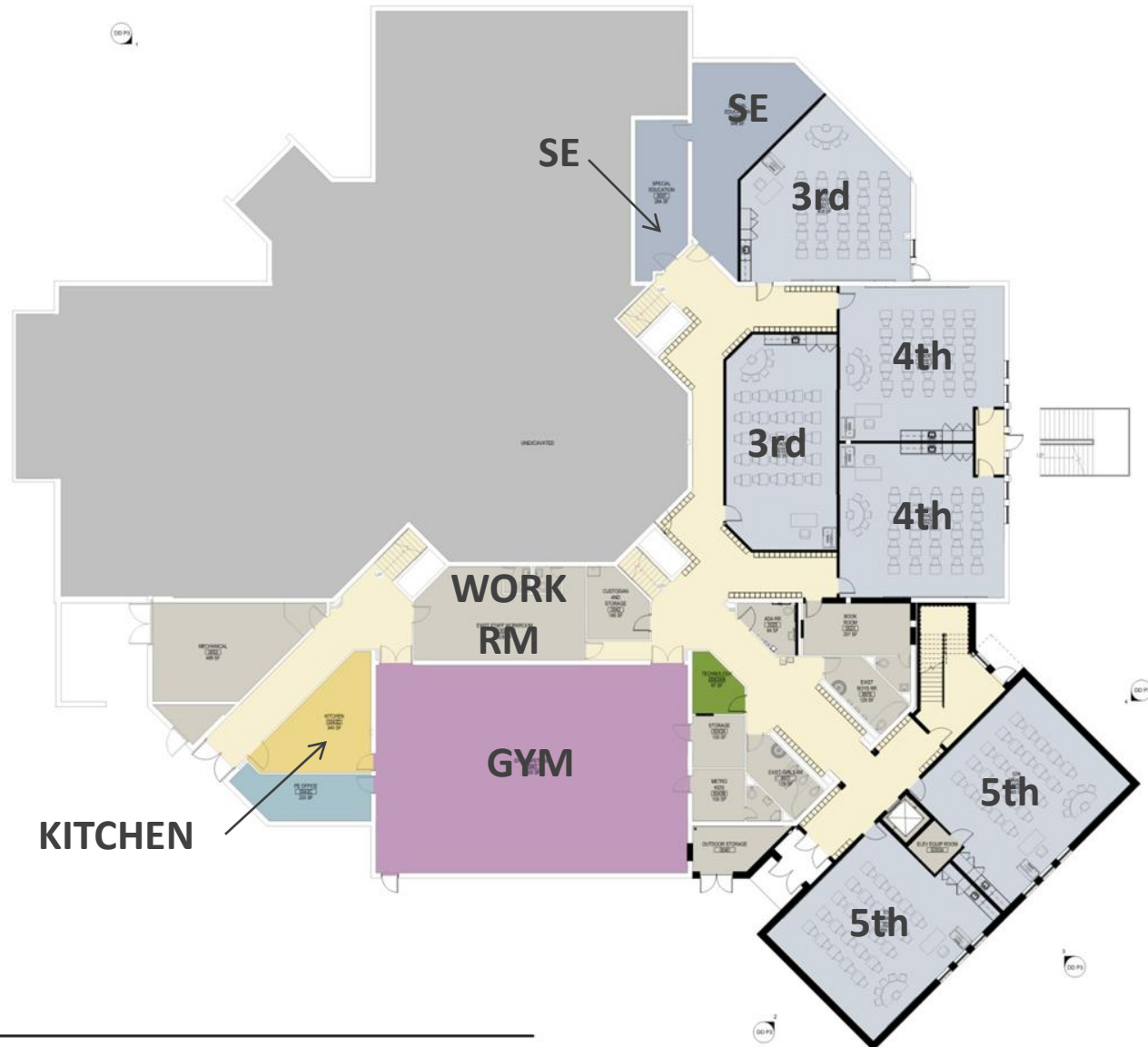
© 2012 Google

Google earth

Eye alt 2301 ft









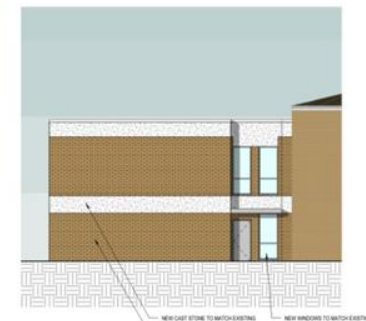
ENTRY ADDITION – ALONG OAKWOOD DRIVE



NORTH VIEW



CLASSROOM ADDITION – ALONG PLEASANT BLVD



SOUTH VIEW

What will be different

- Front entrance will be more secure and welcoming
- With contained classrooms there will be better learning environment
- Sound enhancement system for all classrooms
- Mechanical/electrical/fire system upgrades
- Geothermal and maximum energy efficiencies
- ADA compliance
- Important odds and ends: Satellite clock system, intercom, phone system, technology enhancements

Timeline

- December 11, 2012 – Board review and approval of final plans
- February 5, 2013 – Award of bid
- April 1, 2013 – Construction start
- August 18, 2013 – Substantial completion

Project budget

\$5,800,000



Questions and comments

