

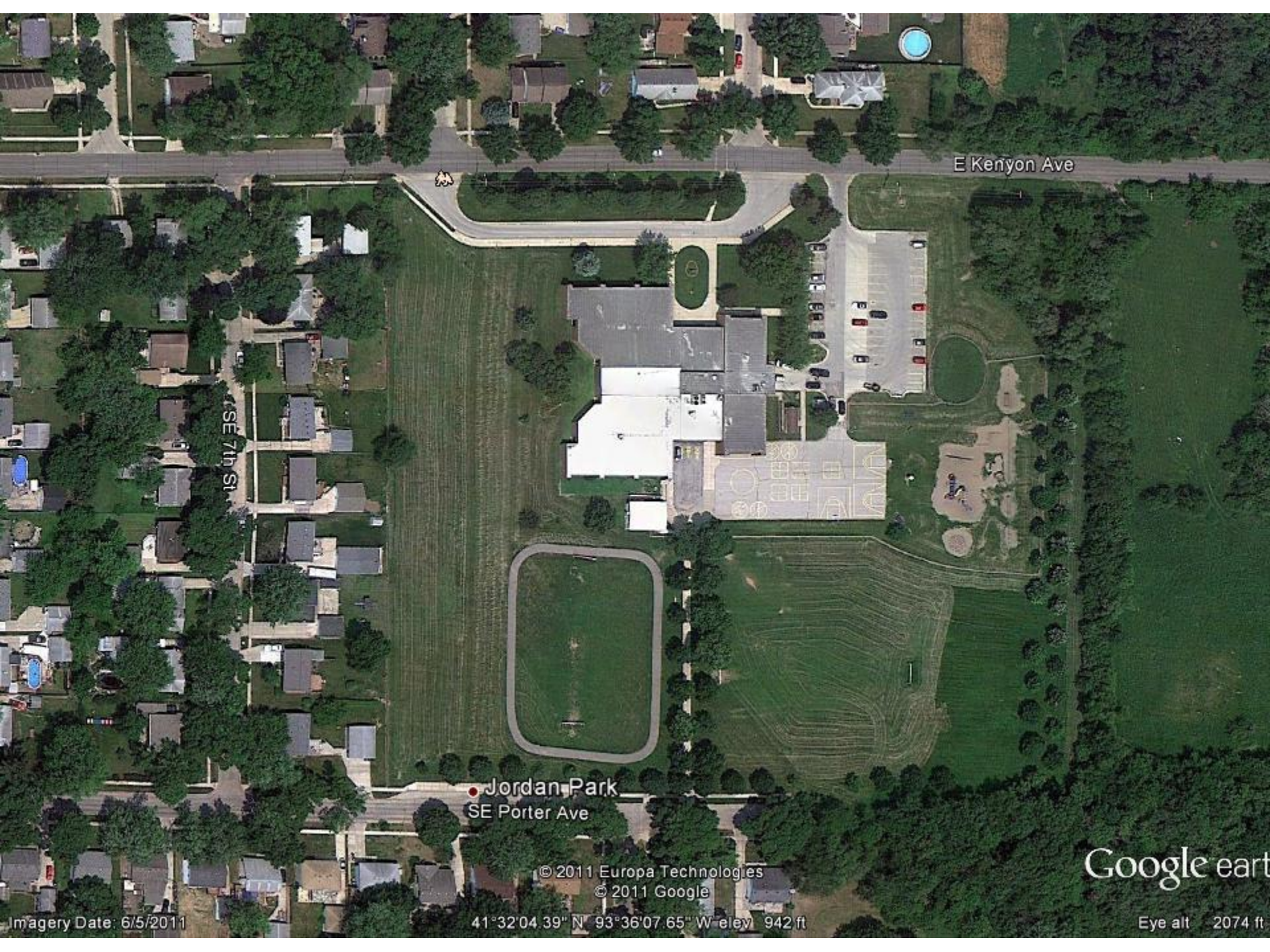


Lovejoy Elementary School

Additions and Renovations

Final Plans

February 21, 2012



E Kenyon Ave

SE 7th St

● Jordan Park
SE Porter Ave

© 2011 Europa Technologies
© 2011 Google

Google earth

Imagery Date: 6/5/2011

41°32'04.39" N 93°36'07.65" W elev 942 ft

Eye alt 2074 ft

EAST KENYON AVENUE

SE 7TH STREET

PARKING LOT

NEW
BUILDING

EXISTING
LOVEJOY ELEMENTARY

NEW
BUILDING

REMOVED
PORTABLE

PLAYGROUND

REMOVED
PORTABLE

BLACKTOP

EAST PORTER STREET

LOVEJOY ELEMENTARY SCHOOL



Temporary classrooms on the south side of the school. Safety/security concern as well as comfort of students during inclement weather.



■ = NEW ADDITION
FLOORPLAN - WEST
1/8" = 1'-0"

3

3

5

3

4

3

3

2

3

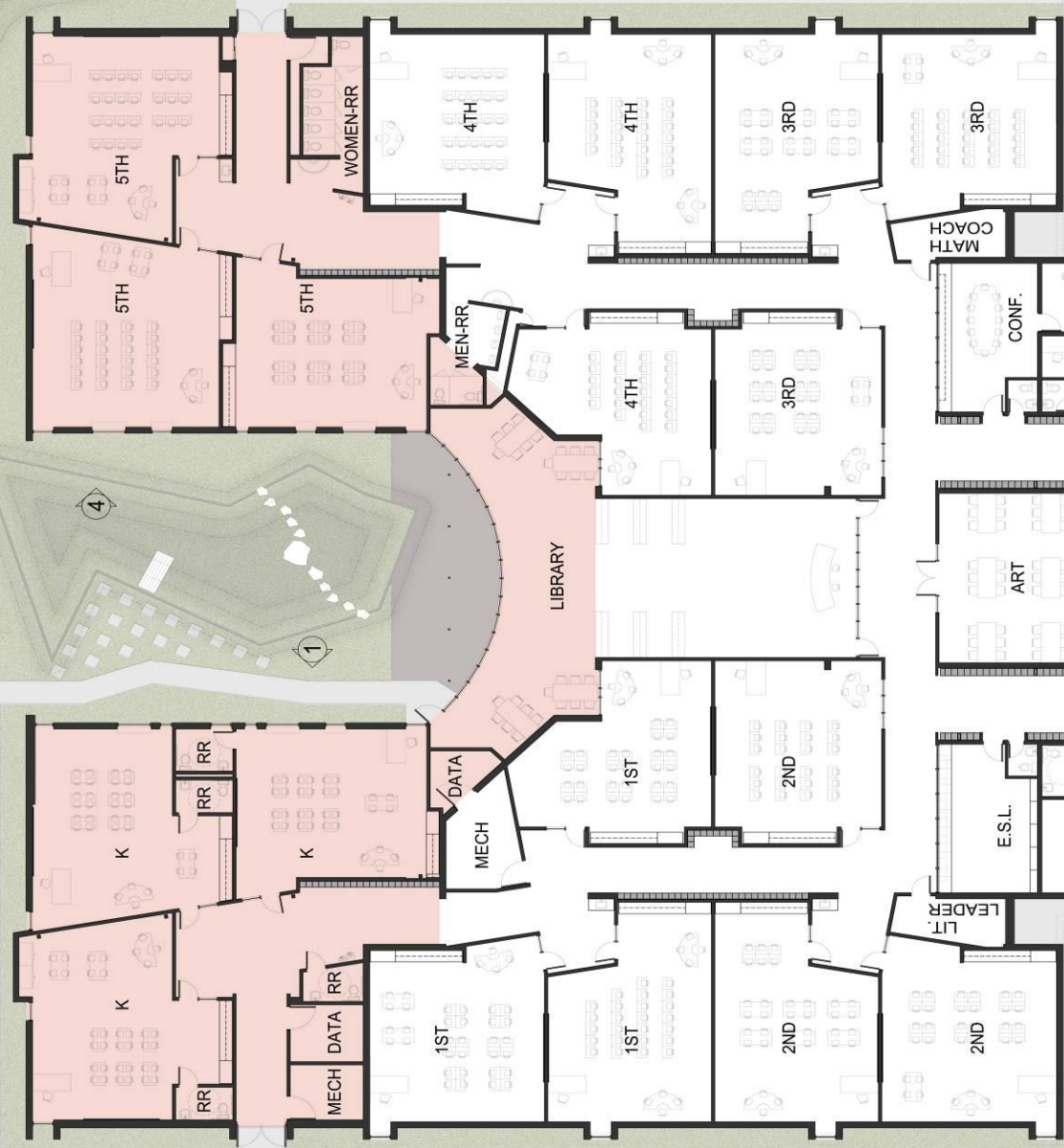
4

1

3

3

5



FLOORPLAN - EAST
1/8" = 1'-0"

1

3

4

3

3

2

3

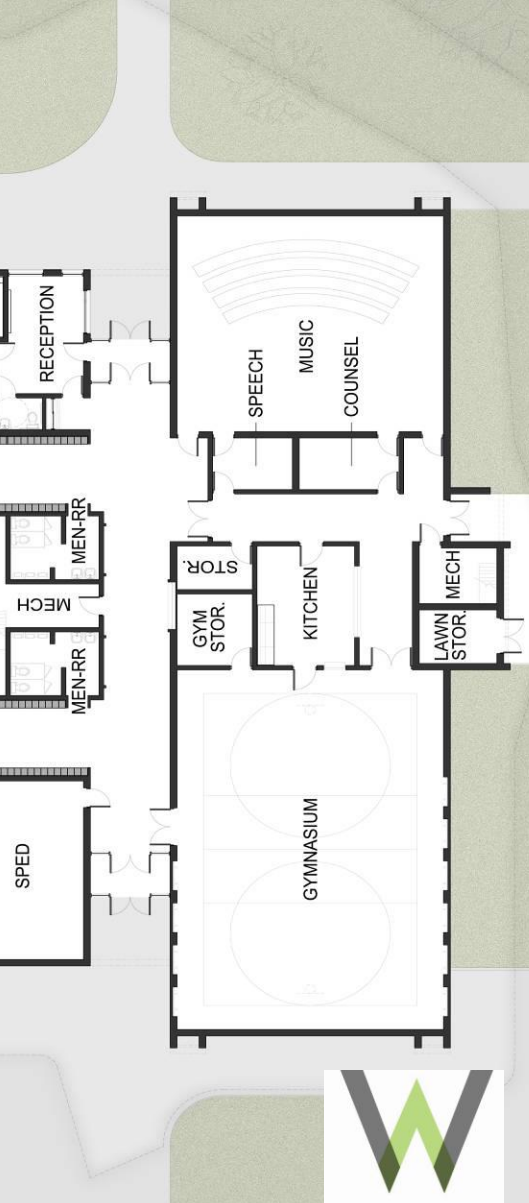
4

1

3

3

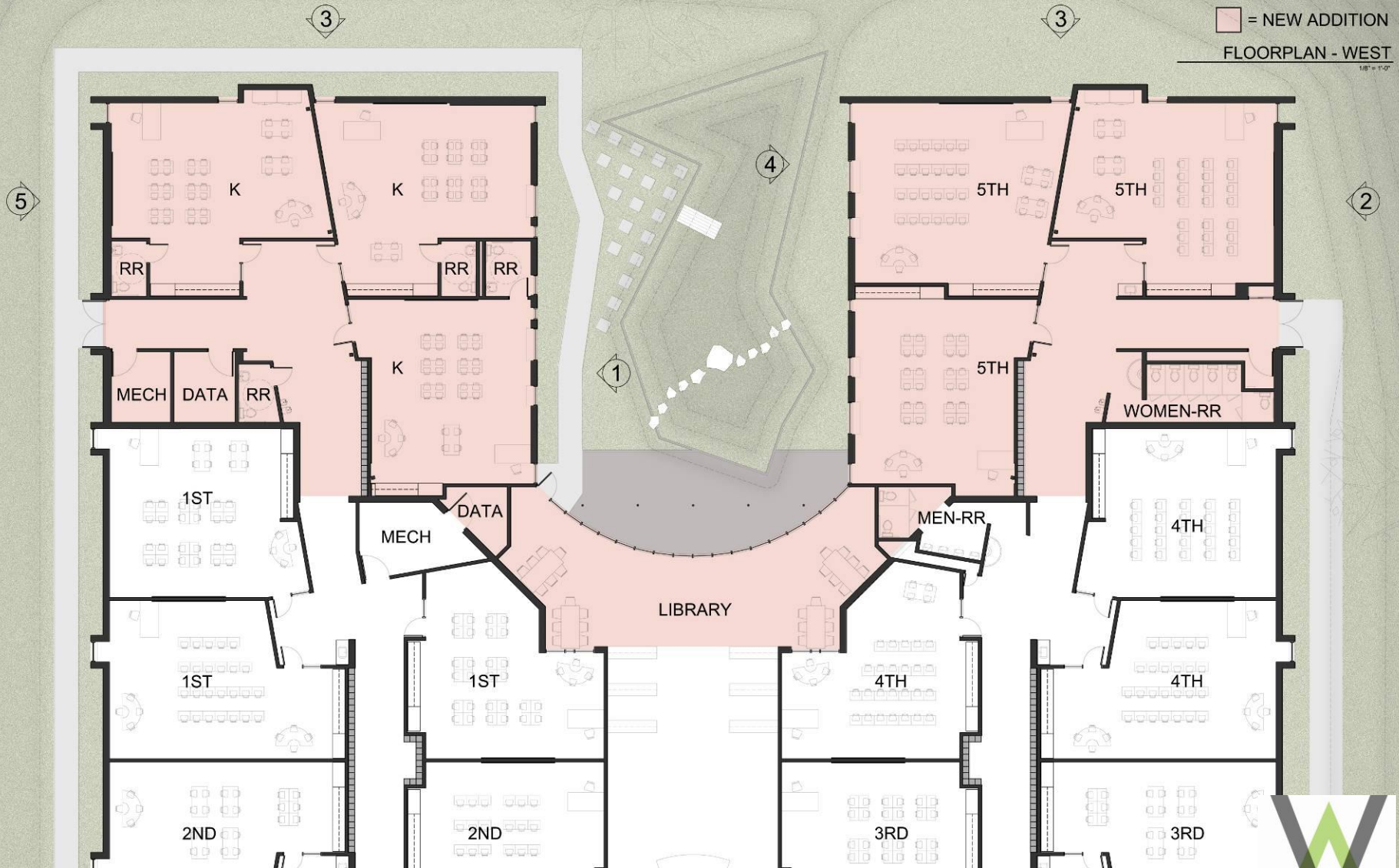
5



LOVEJOY ELEMENTARY SCHOOL



Proposed classroom addition



LOVEJOY ELEMENTARY SCHOOL



FLOORPLAN - EAST
1/8" = 1'-0"

LOVEJOY ELEMENTARY SCHOOL





EXTERIOR ELEVATION - NORTH ②
1/8" = 1'-0"



EXTERIOR ELEVATION - NORTH (COURTYARD) ①
1/8" = 1'-0"



EXTERIOR ELEVATION - WEST (OVERALL) ③
1/8" = 1'-0"



EXTERIOR ELEVATION - SOUTH ⑤
1/8" = 1'-0"



EXTERIOR ELEVATION - SOUTH (COURTYARD) ④
1/8" = 1'-0"



WELLS
+ associates

LOVEJOY ELEMENTARY SCHOOL
PRELIMINARY PLANS

Project Features

“Students First”

- Vastly improved classroom layout and finishes
- Technology upgrades
 - Faster internet
 - Improved wireless connections
- Acoustic improvements
 - Reduced classroom disruptions “walls”
 - Sound enhancement systems for classrooms
- Security and classroom environment improvements
 - Students would not have to leave the school for classes
- Energy efficiencies including geo thermal system
- Additional student restrooms
- Miscellaneous : new clock and P.A. systems

Lovejoy Elementary Project Budget

\$4,917,530

Five-year plan....Ten-year vision

Timeline

January 10, 2012 – Preliminary plans

February 21, 2012 – Board approval of plans

April 3, 2012 – Award of bids

April 2012 – Construction start

Fall 2012 - Completion