

# Final plans for addition and renovations to **Jefferson Elementary School**

Board Meeting  
December 11, 2012



Think. Learn. **Grow.**

[www.dmschools.org](http://www.dmschools.org)



ery Date: 9/14/2012

41°32'55.98" N 93°39'01.65" W elev: 930 ft

Eye alt: 190



SW 26TH STREET

GEO-THERMAL WELL FIELD  
(HORIZONTAL BORES)

GEO-THERMAL WELL FIELD  
(HORIZONTAL BORES)

PLAY  
GROUND

BLACKTOP

NEW  
ADDITION

EXISTING  
JEFFERSON  
ELEMENTARY

BLACKTOP

PLAY  
GROUND

EXISTING  
PARKING

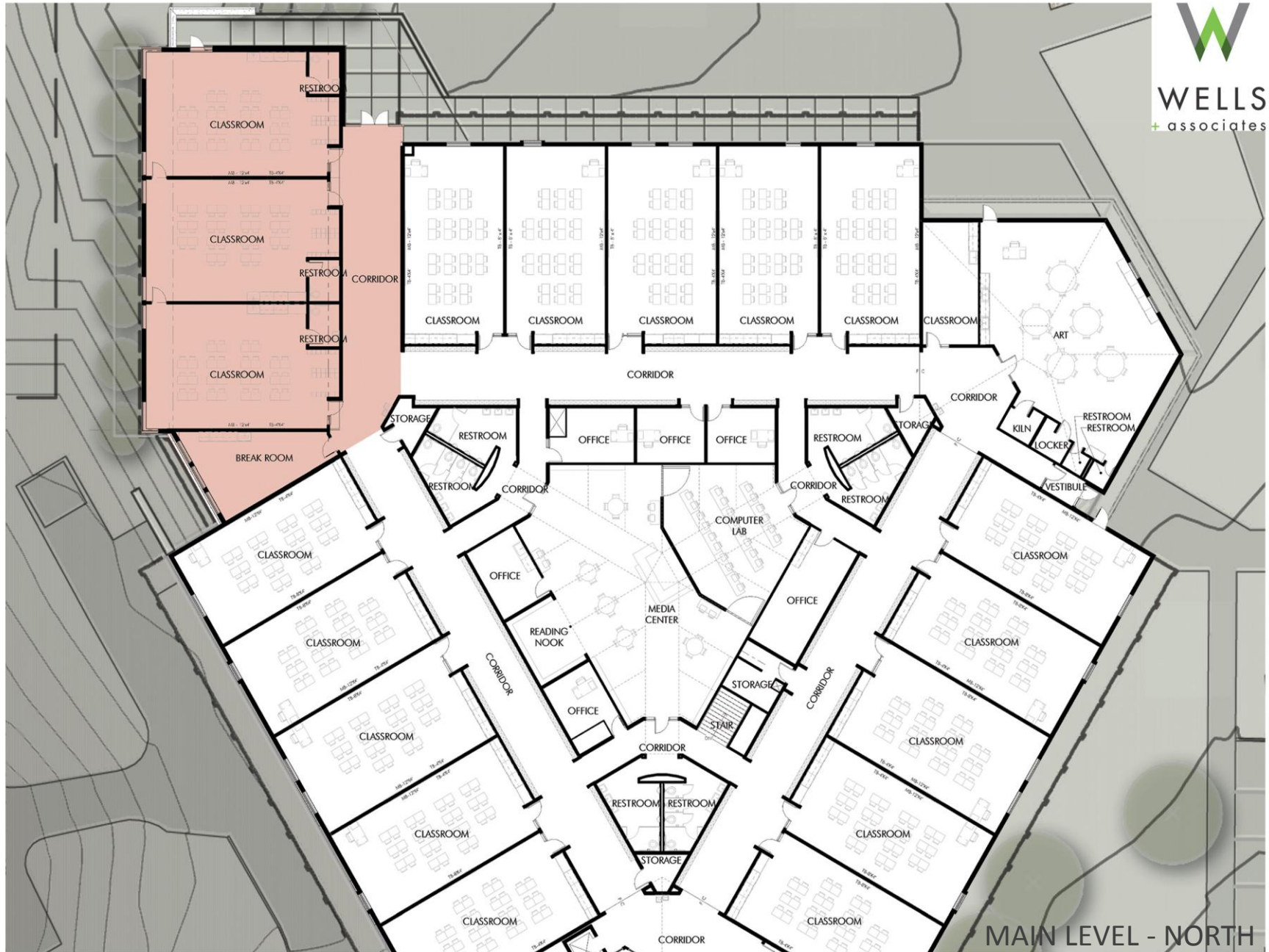
EXISTING DROP-OFF

WATROUS AVENUE







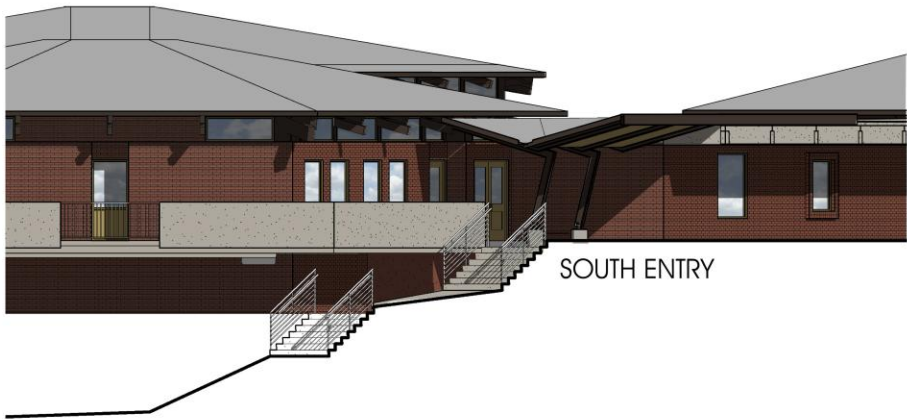


MAIN LEVEL - NORTH

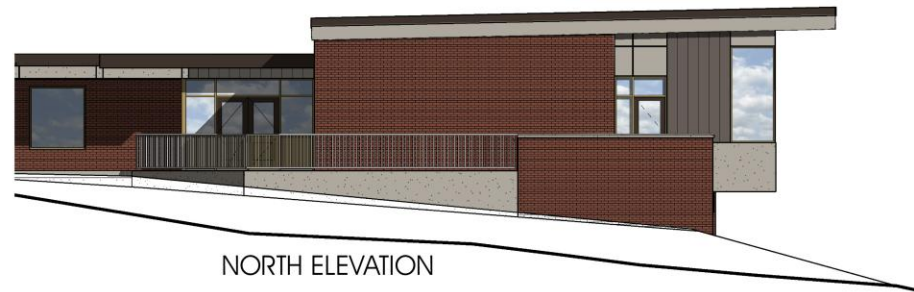




WEST ELEVATION



SOUTH ENTRY



NORTH ELEVATION



Think. Learn. **Grow.**

[www.dmschools.org](http://www.dmschools.org)

# What will be different

- With contained classrooms there will be better learning environment
- Sound enhancement system for all classrooms
- Mechanical/electrical upgrades
- Geothermal and maximum energy efficiencies
- ADA compliance
- Odds and important ends: Satellite clock system, intercom, phone system, technology enhancements



# No more temporary partition walls



# ADA compliance



# Location of addition



# Timeline

- December 11, 2012 – Board review and approval of final plans
- January 22, 2013 – Award of bid
- April 1, 2013 – Construction start
- August 18, 2013 – Substantial completion



# Project budget

\$5,700,000



# Questions and comments

