

Howe Elementary School

Office/entry renovation

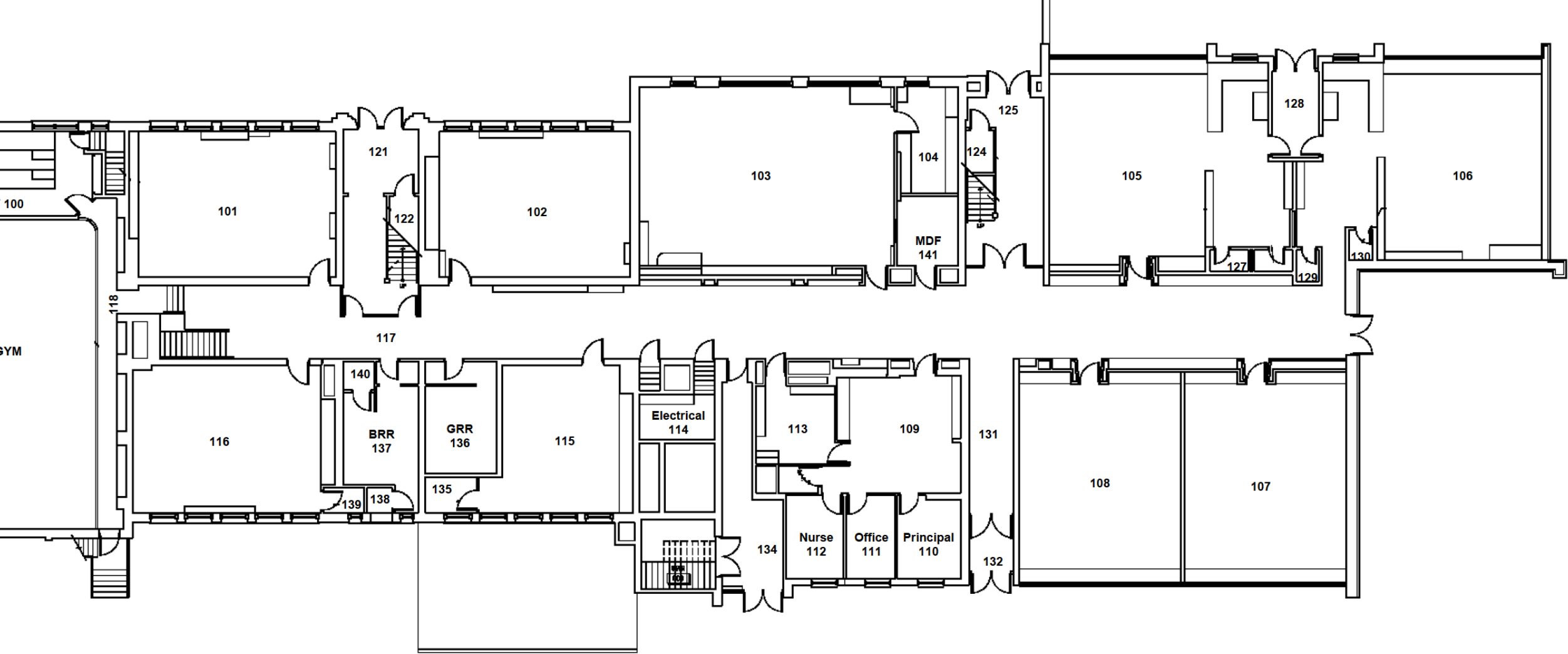
Final Plans

January 5, 2016



Think. Learn. **Grow.**

www.dmschools.org

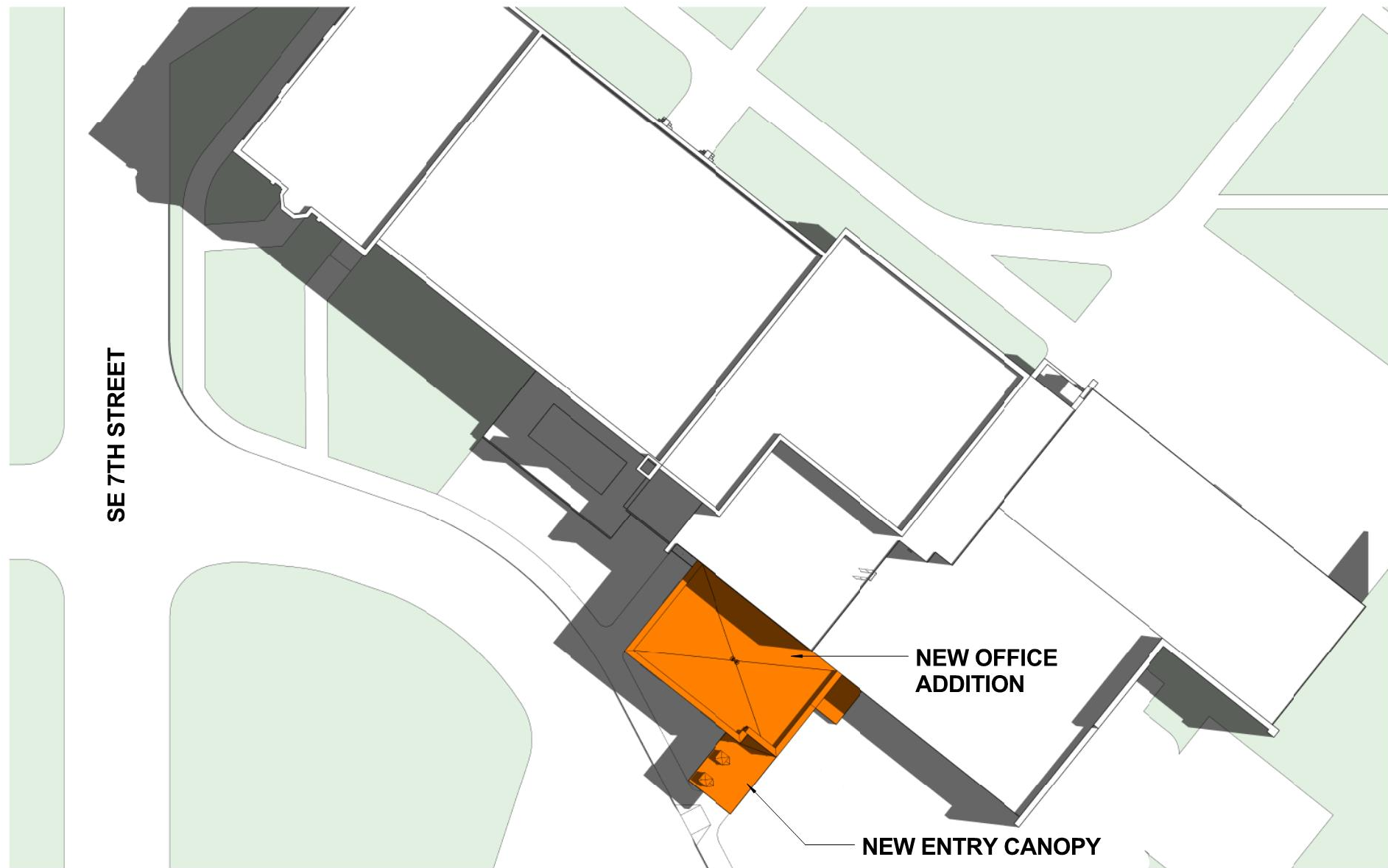


Existing floor plan





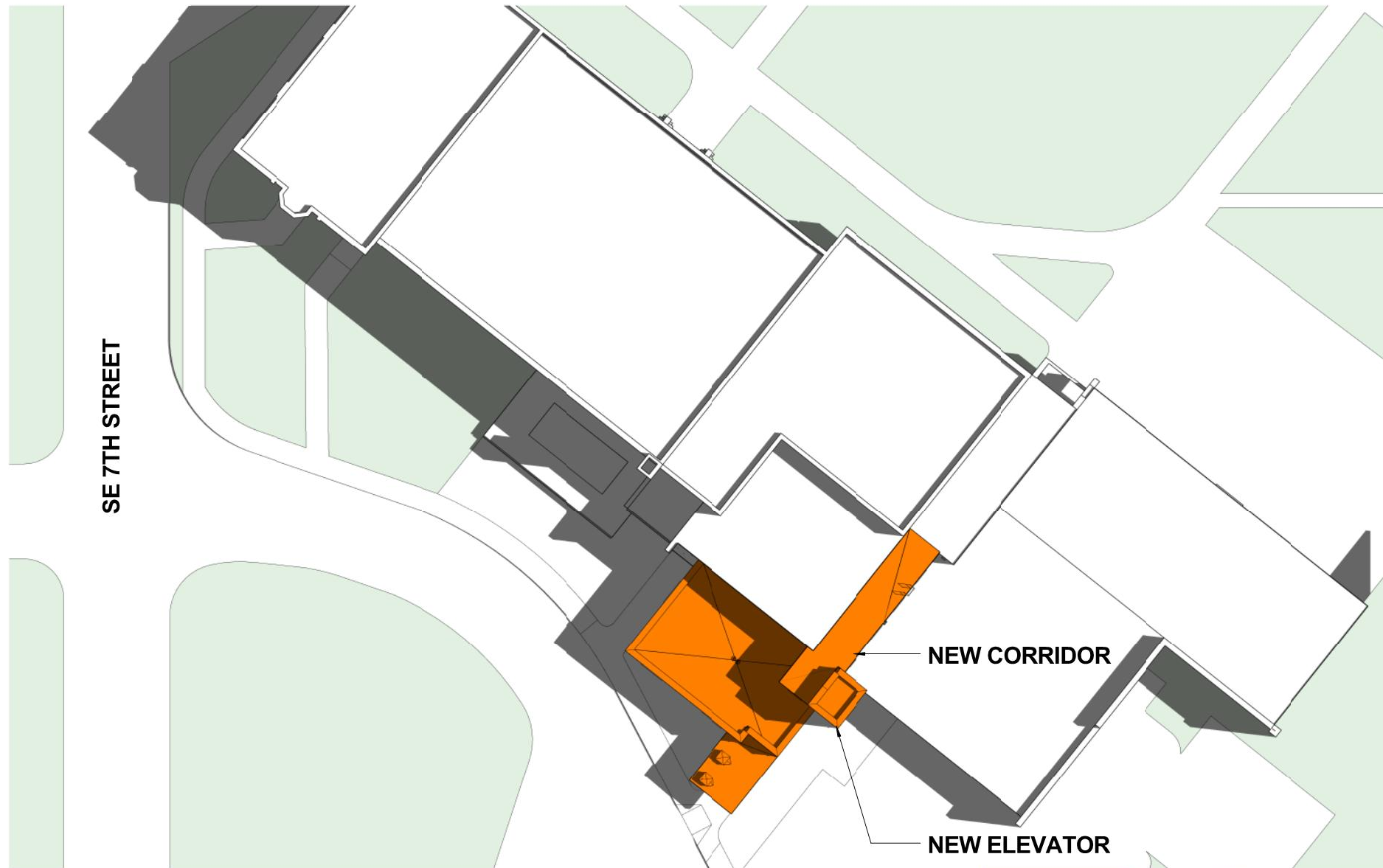
HOWE ELEMENTARY | OFFICE ADDITION
SITE PLAN (BASE BID)





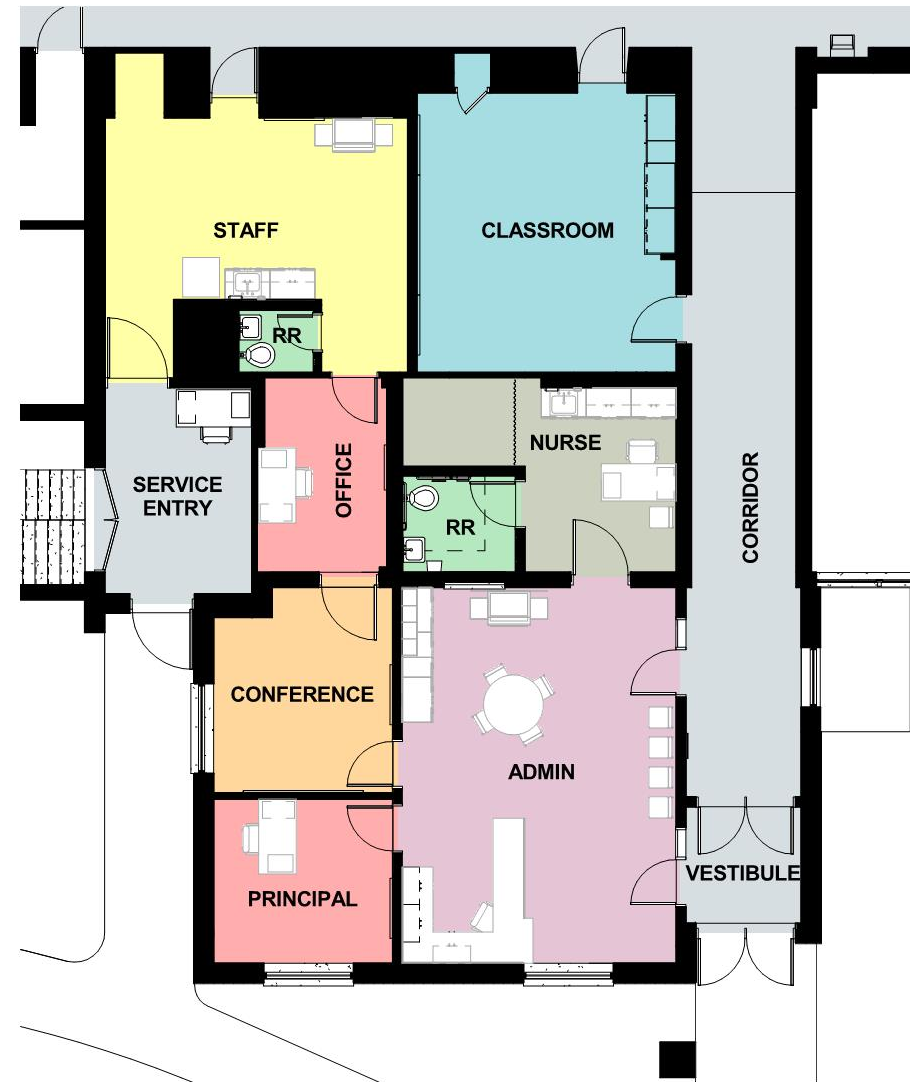
SE 7TH STREET

HOWE ELEMENTARY | OFFICE ADDITION
SITE PLAN (ALTERNATE)



ROOM

- ADMINISTRATION
- CIRCULATION
- CLASSROOM
- CONFERENCE
- NURSE
- OFFICE
- RESTROOM
- STAFF



MAIN LEVEL PLAN



HOWE ELEMENTARY | OFFICE ADDITION

FLOOR PLAN (BASE BID)



SOUTH ELEVATION



PERSPECTIVE

HOWE ELEMENTARY | OFFICE ADDITION
ELEVATIONS & RENDERING (BASE BID)

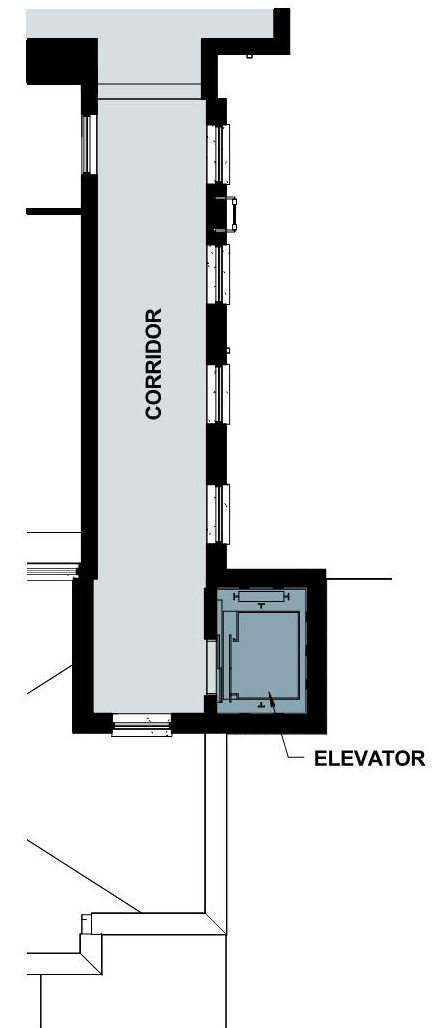


ROOM

- ADMINISTRATION
- CIRCULATION
- CLASSROOM
- CONFERENCE
- NURSE
- OFFICE
- RESTROOM
- STAFF



MAIN LEVEL PLAN

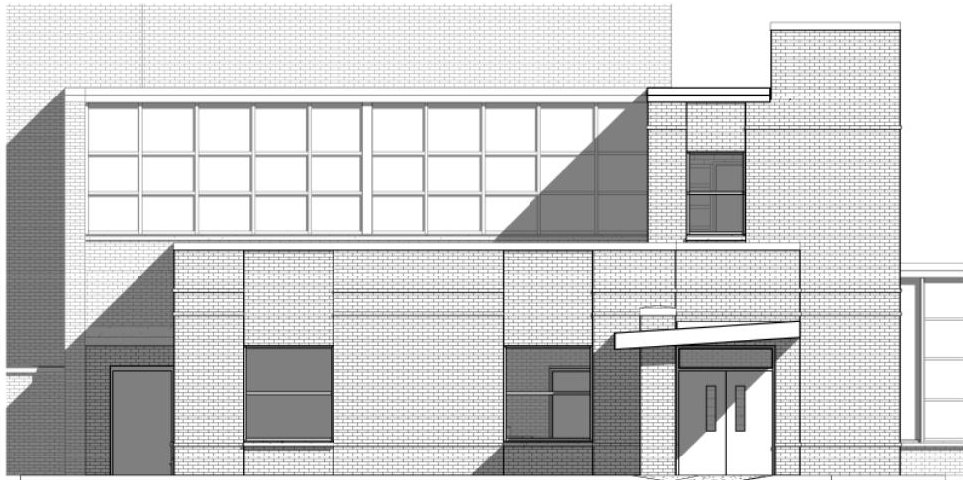


UPPER LEVEL PLAN



HOWE ELEMENTARY | OFFICE ADDITION

FLOOR PLANS (ALTERNATE)



SOUTH ELEVATION



PERSPECTIVE

HOWE ELEMENTARY | OFFICE ADDITION
ELEVATIONS & RENDERING (ALTERNATE)



Project Highlights

- Improved entrance to school through the office.
- Improved office support spaces.

Timeline and Budget

- January 5, 2016 – Board review and approval of final plans
- June 2016 – Construction start
- August 2016 – Completion

Project budget - \$500,000

Funding – Year 1 of SWP

QUESTIONS AND COMMENTS

Link to this presentation

<http://www.dmschools.org/departments/operations/construction/students-first/renovation-construction-plans/>



Think. Learn. **Grow.**

www.dmschools.org