

Final plans for addition and renovations to **Findley Elementary School**

Board Meeting
November 27, 2012

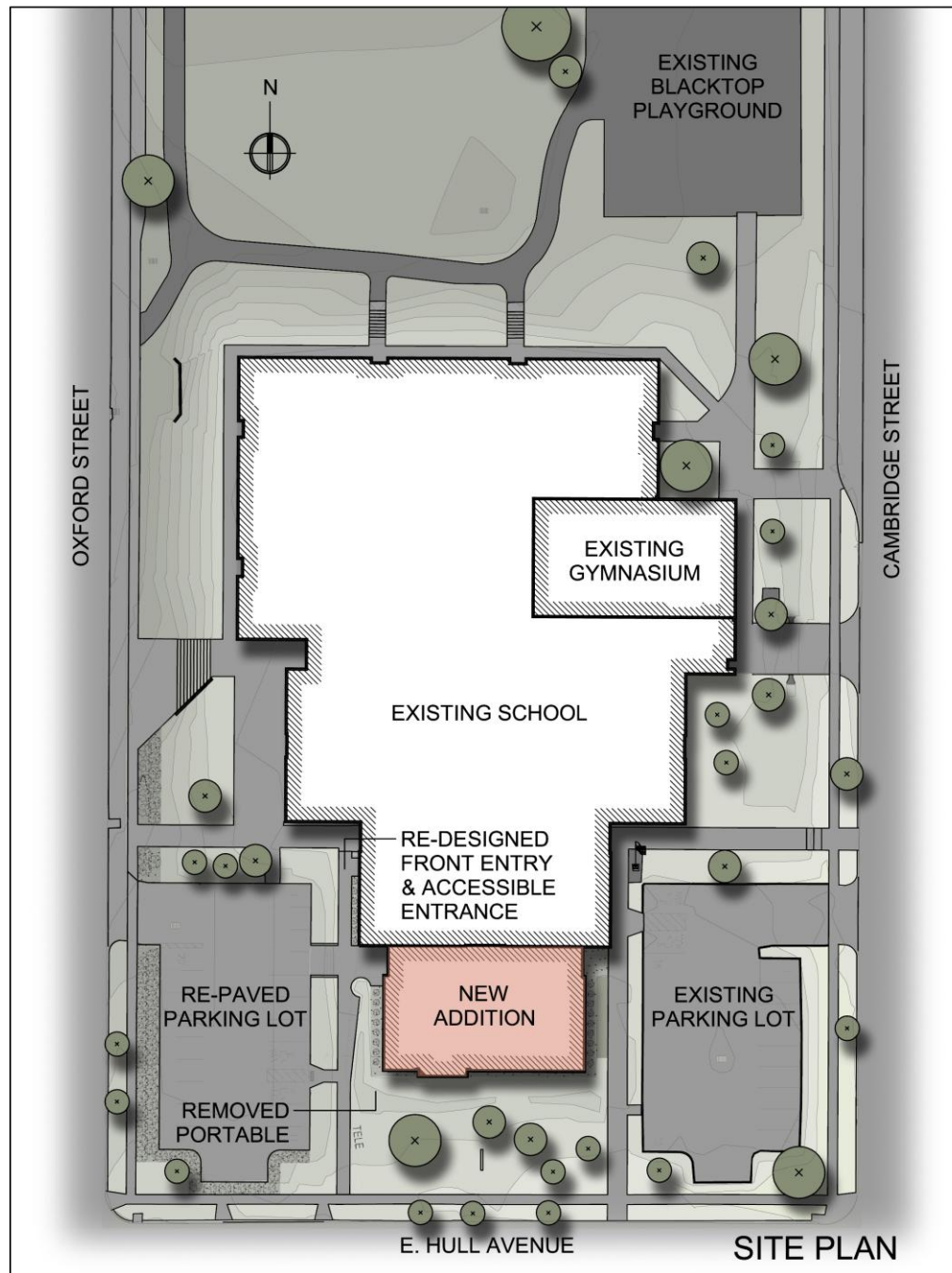


Think. Learn. **Grow.**

www.dmschools.org

Final plans for Findley Elementary School







WELLS
+ associates



- ORIGINAL BUILDING (1966)
- EARLY ADDITION (1971)
- NEW ADDITION

FLOOR PLAN



FINDLEY ELEMENTARY

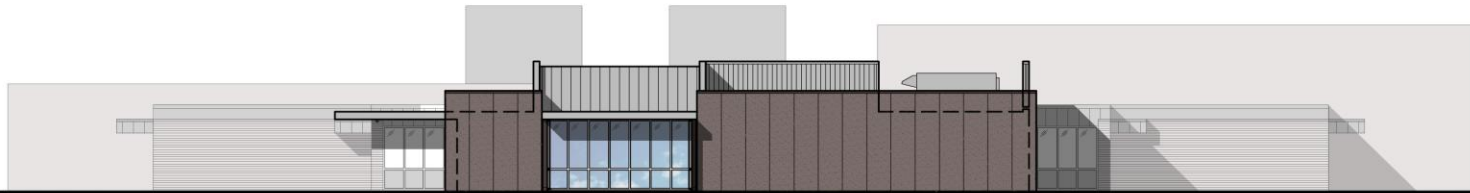
FLOOR PLAN - SOUTH

FLOOR PLAN - NORTH

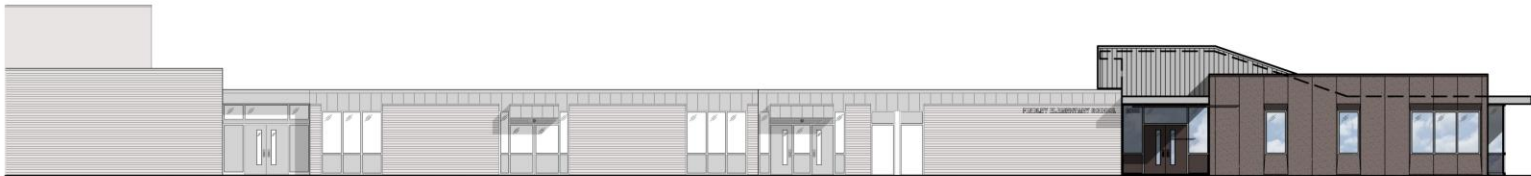




NORTH ELEVATION



SOUTH ELEVATION



WEST ELEVATION



EAST ELEVATION

Office to new main entrance



Location of office moved to front of building



Addition



Current office

No more partitions and file cabinet walls



No more mobile classroom

Classes will be inside the school



What will be different

- Front entrance will be more secure and welcoming
- With contained classrooms there will be better learning environment
- Sound enhancement system for all classrooms
- Mechanical/electrical/fire system upgrades including air conditioning added to many spaces
- Geothermal and maximum energy efficiencies
- ADA compliance
- Important odds and ends: Satellite clock system, intercom, phone system, technology enhancements

Timeline

- November 27, 2012 – Board review and approval of final plans
- January 8, 2013 – Award of bid
- April 1, 2013 – Construction start
- August 18, 2013 – Completion

Project budget

\$5,500,000



Questions and comments

