

Cattell Elementary

Final Plans

Café addition and renovation

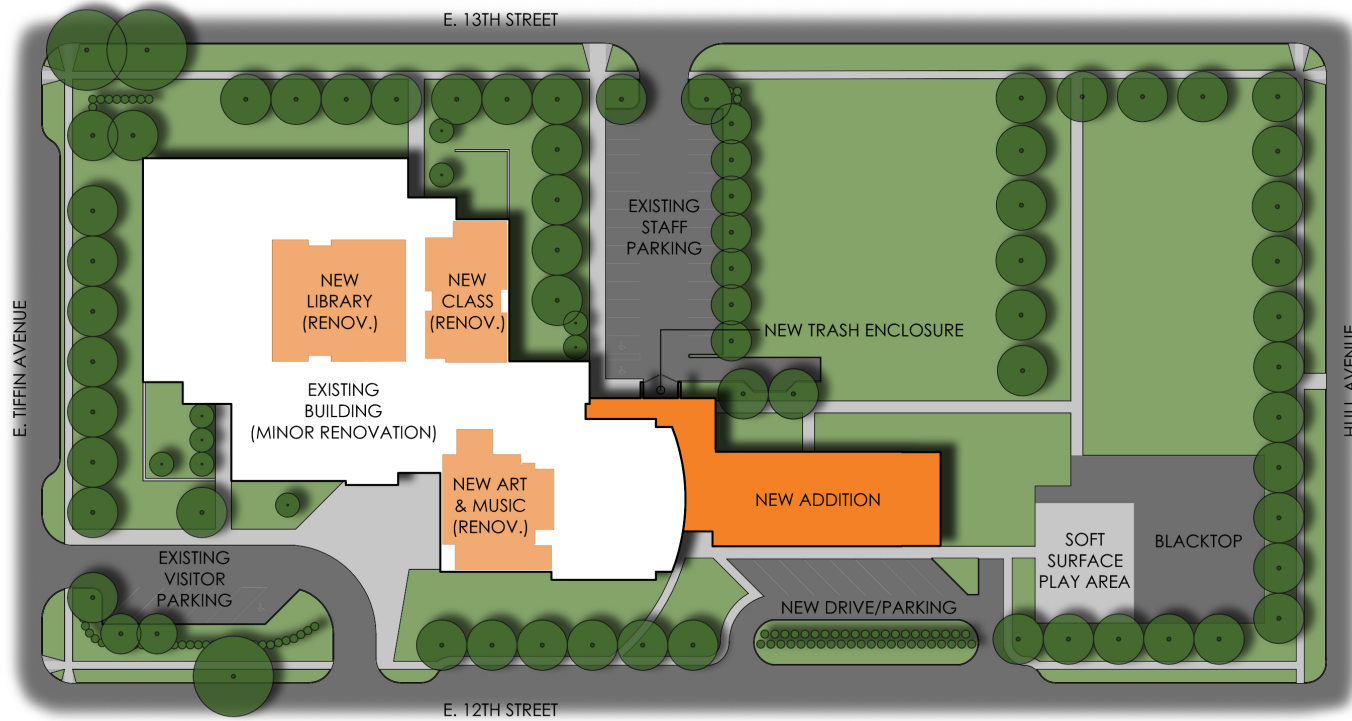
Board Meeting
December 13, 2016



Think. Learn. **Grow.**

www.dmschools.org

Site Plan



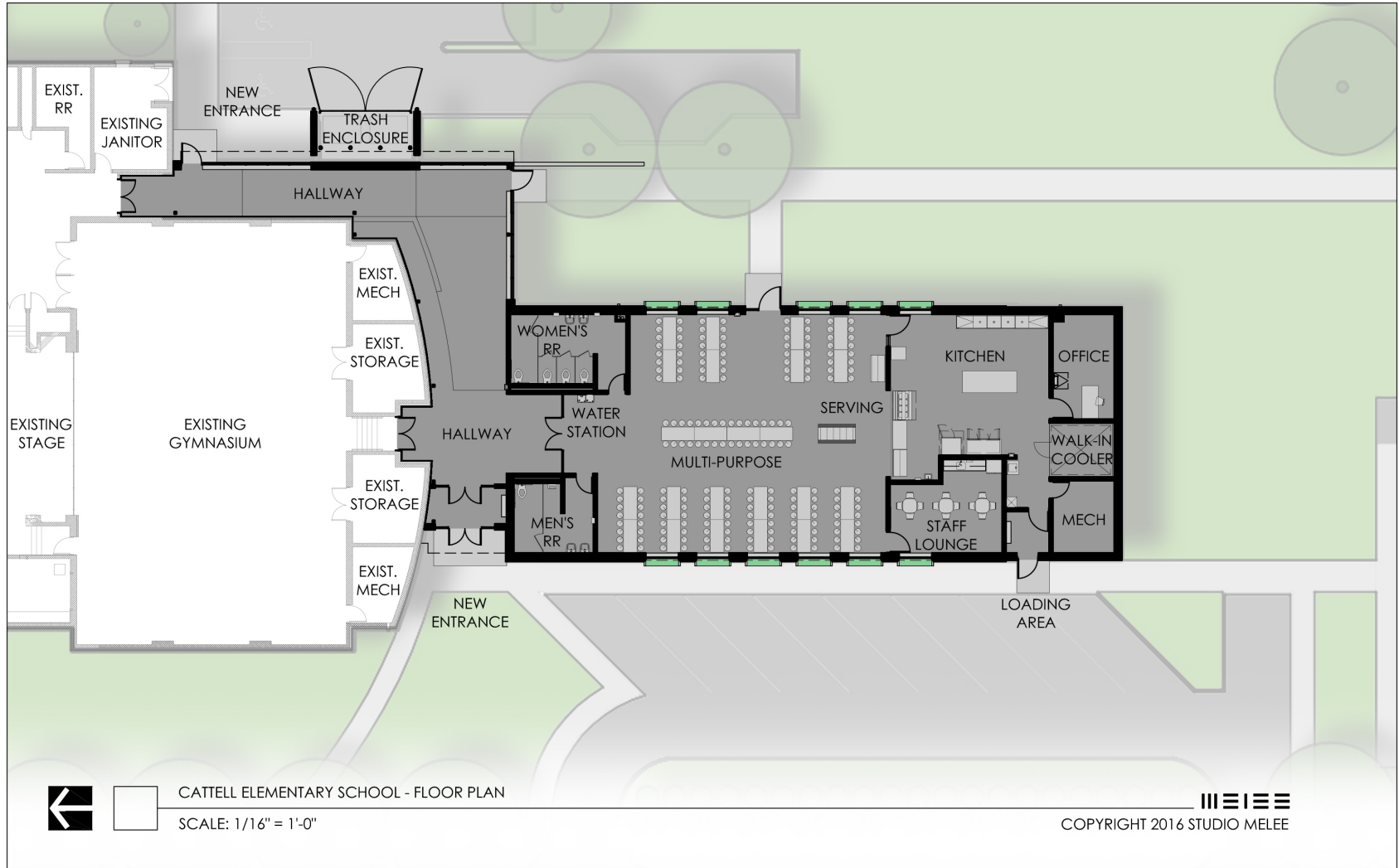
CATTELL ELEMENTARY SCHOOL - SITE PLAN

SCALE: 1" = 50'



COPYRIGHT 2016 STUDIO MELEE

Floor plan - Cafe



Elevations



SOUTH ELEVATION



EAST ELEVATION



WEST ELEVATION



CATTELL ELEMENTARY SCHOOL - ELEVATIONS

SCALE: 1/16" = 1'-0"



COPYRIGHT 2016 STUDIO MELEE

Highlights of project

- Adequate Library space.
- Reconfigured Art and Music.
- Designated Band and Orchestra locations.
- Some additional office space for improved collaboration.
- Improved building flow.
- Improved after school programming spaces.

Timeline

- December 13, 2016 – Board review of final plans
- April 1, 2017 – Construction start
- August 15, 2017 – Completion

Funding

- Project budget – Estimated \$3,500,000
- Funding – Year 2 of SWP plan