

Cattell Elementary School

Office/entry renovation

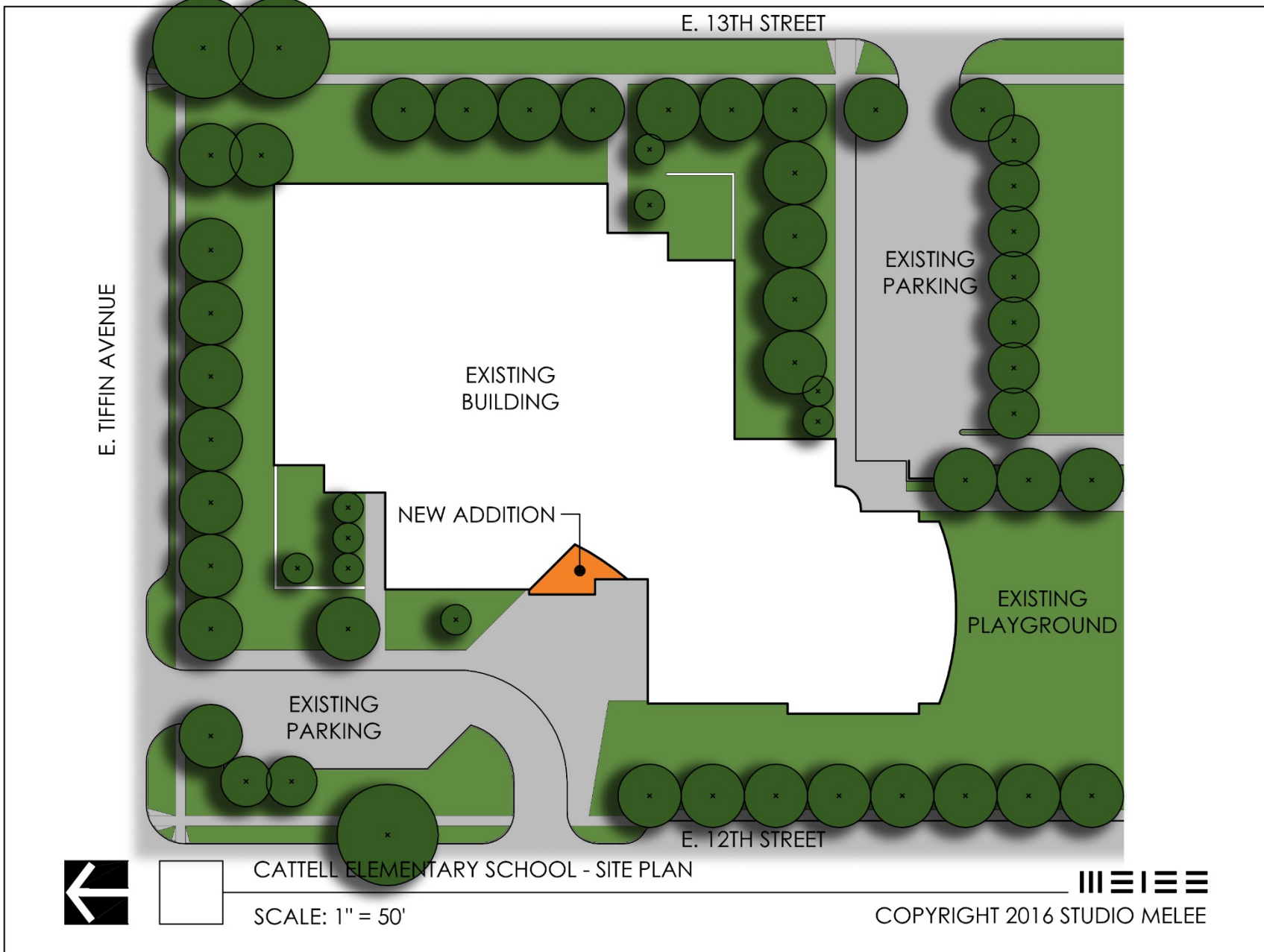
Final Plans

January 19, 2016

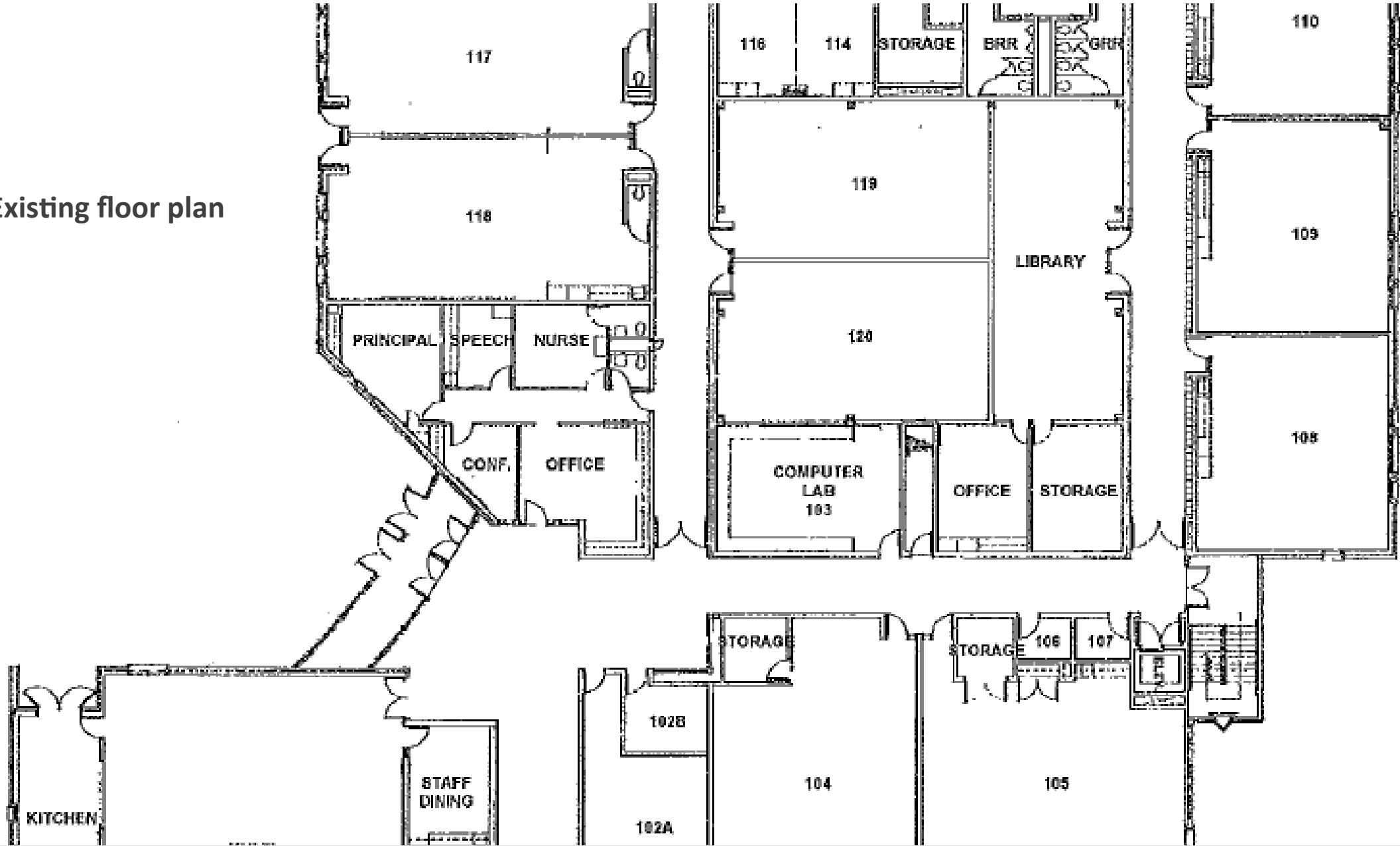


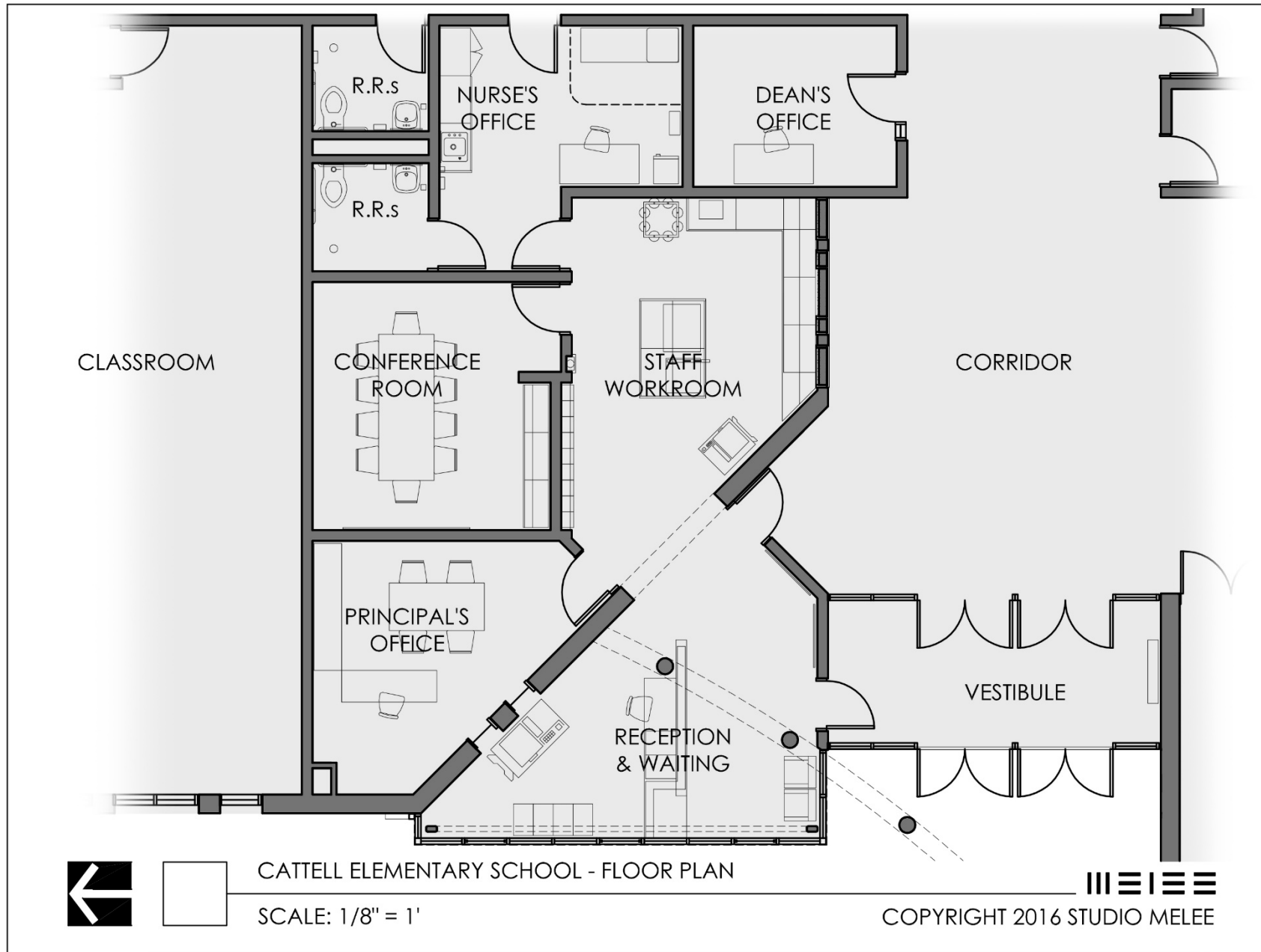
Think. Learn. **Grow.**

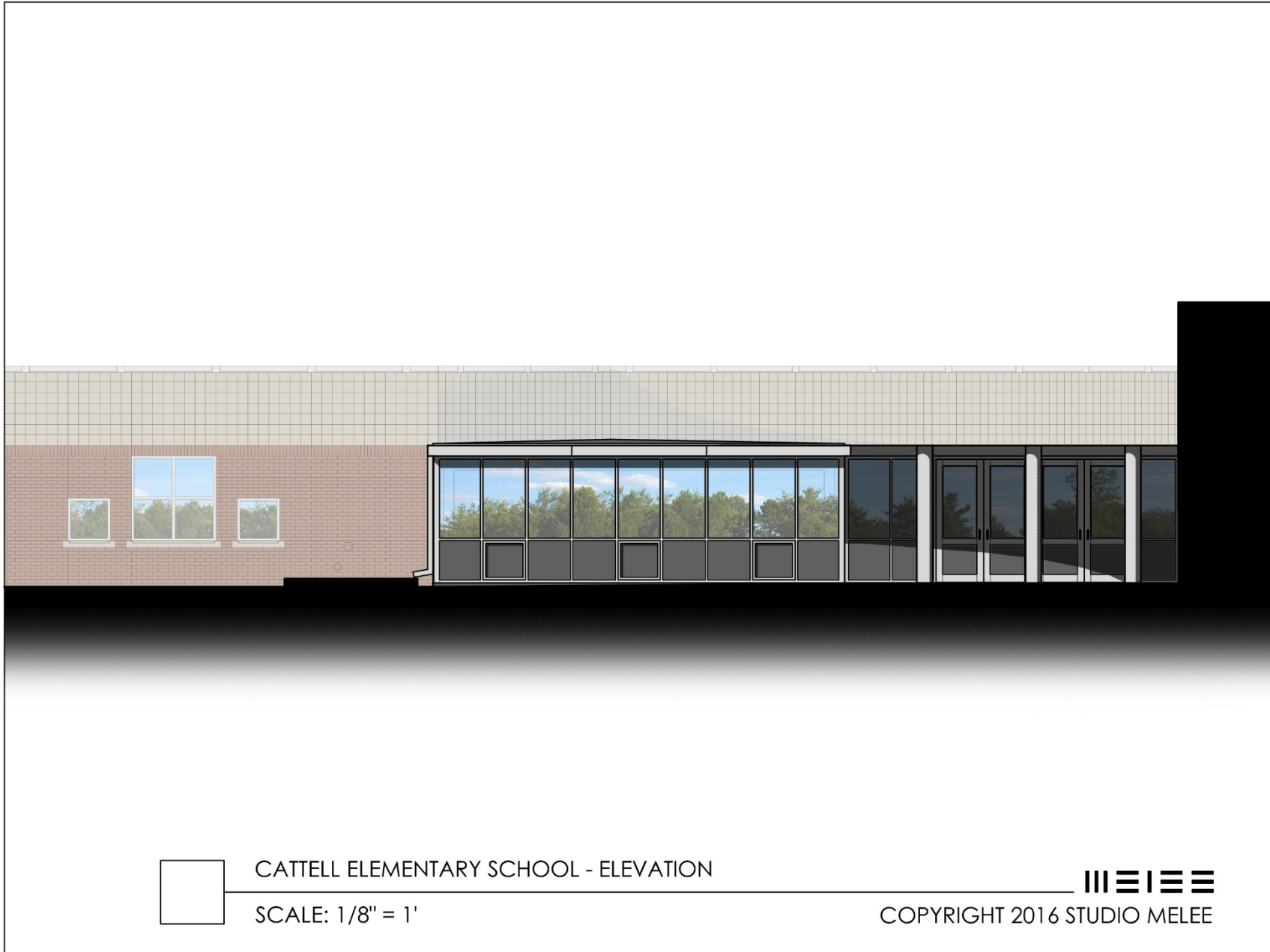
www.dmschools.org



Existing floor plan







CATTELL ELEMENTARY SCHOOL - ELEVATION

SCALE: 1/8" = 1'



COPYRIGHT 2016 STUDIO MELEE

Project Highlights

- New entrance through the office.
- ADA upgrades.
- Improved work area for staff.
- Improved first impression of Cattell.
- New conference space.

Timeline and Budget

- January 21, 2016 – Board review and approval of final plans
- June 2016 – Construction start
- August 2016 – Completion

Project budget - \$400,000

Funding – Year 1 of SWP

QUESTIONS AND COMMENTS

Link to this presentation

<http://www.dmschools.org/departments/operations/construction/students-first/renovation-construction-plans/>



Think. Learn. **Grow.**

www.dmschools.org