

Brody Middle School

Office/entry renovation

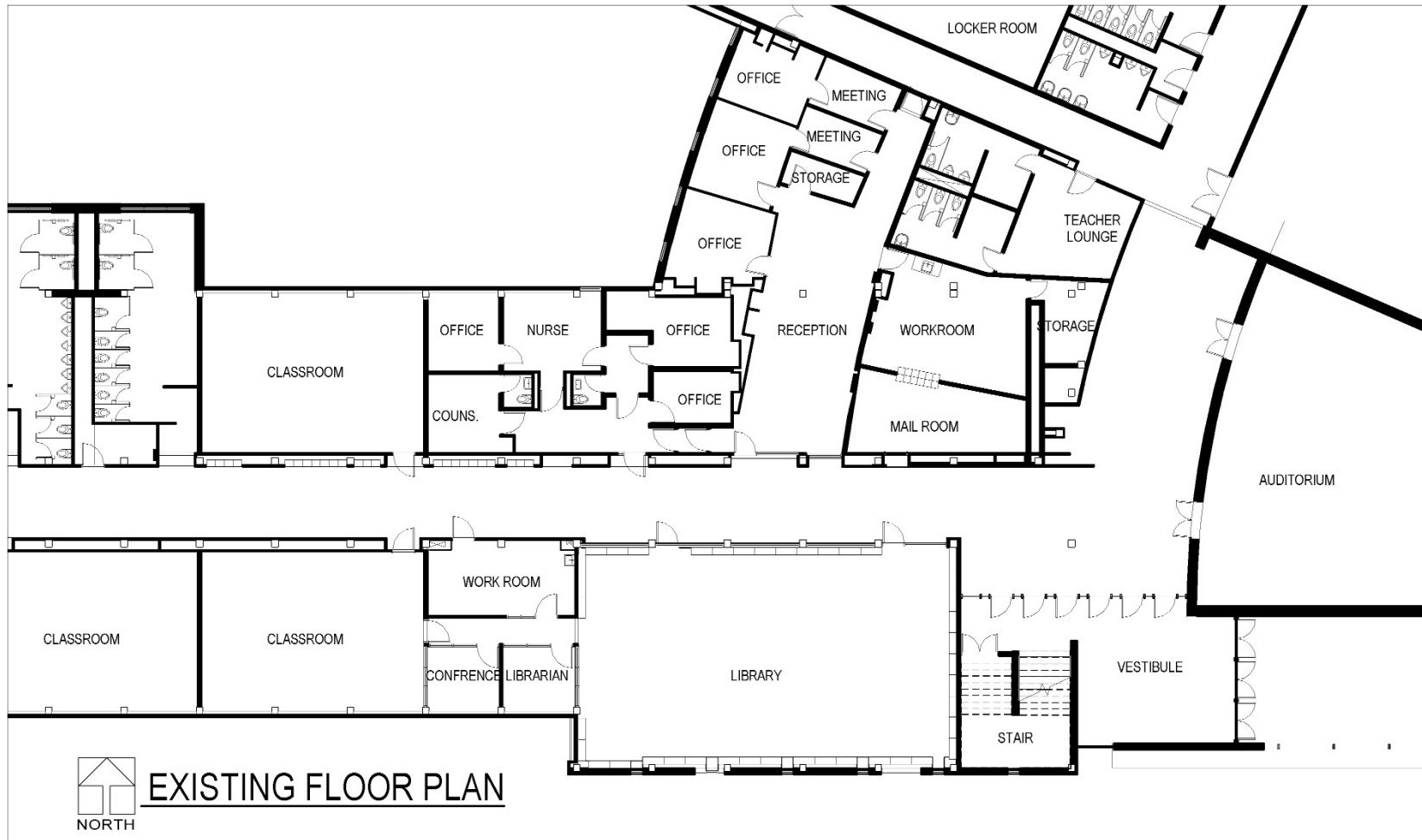
Final Plans

December 8, 2015



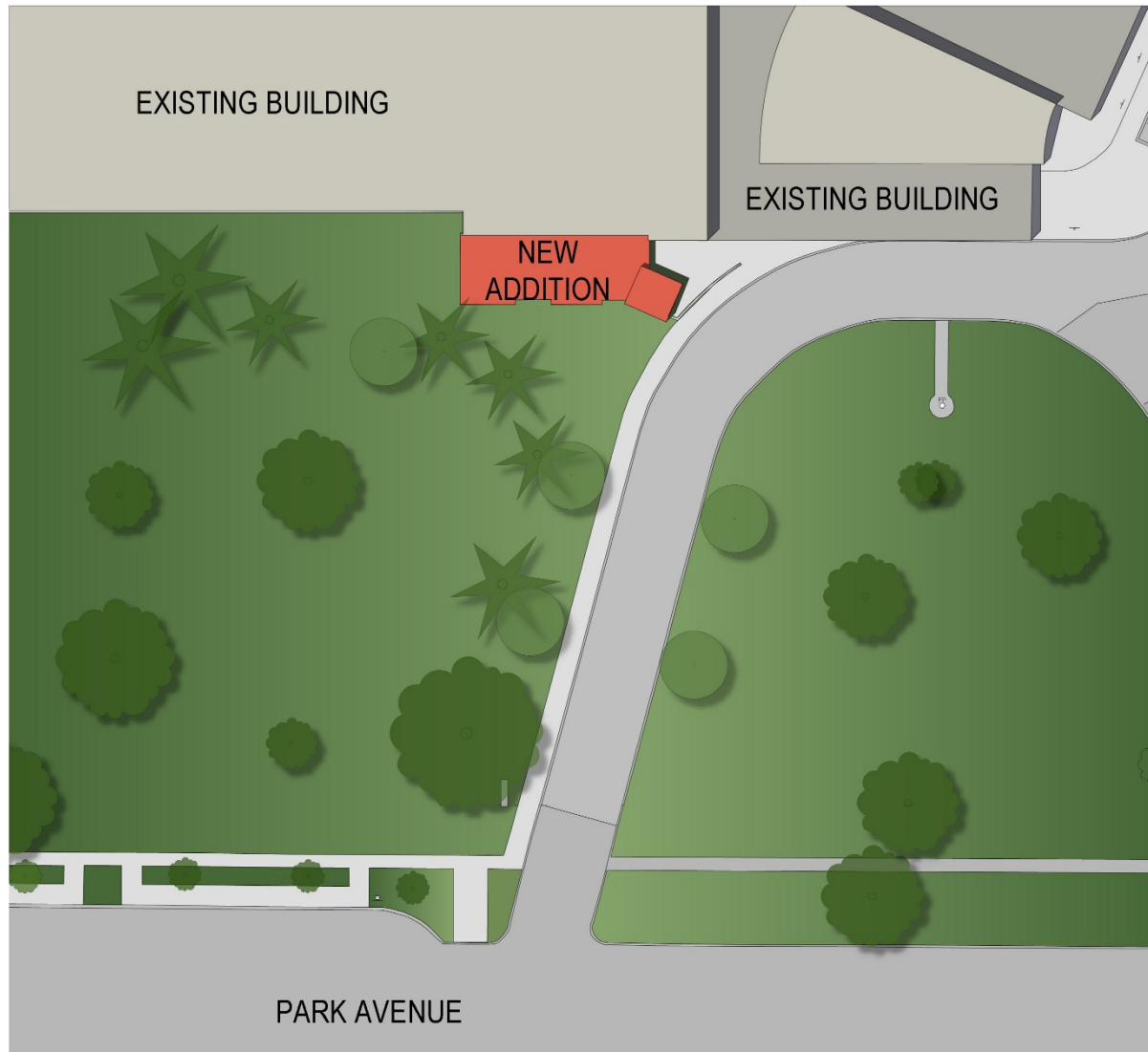
Think. Learn. **Grow.**

www.dmschools.org





FLOOR PLAN



 NEW ADDITION



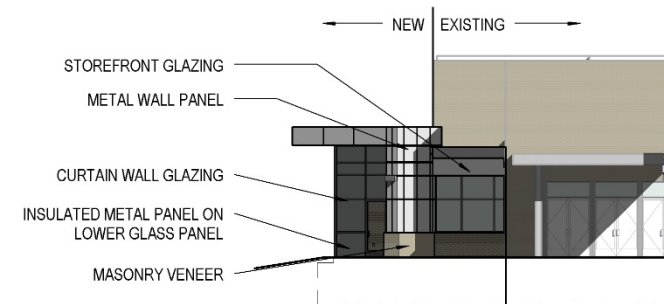
BRODY MIDDLE SCHOOL

2501 Park Avenue, Des Moines, IA 50321

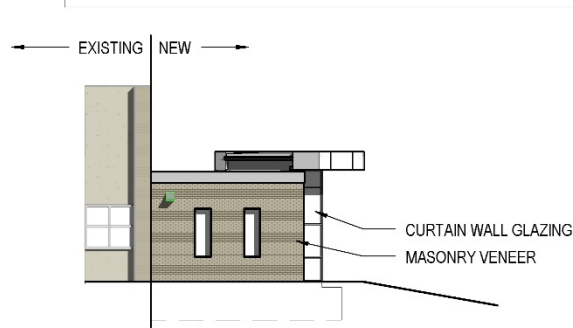




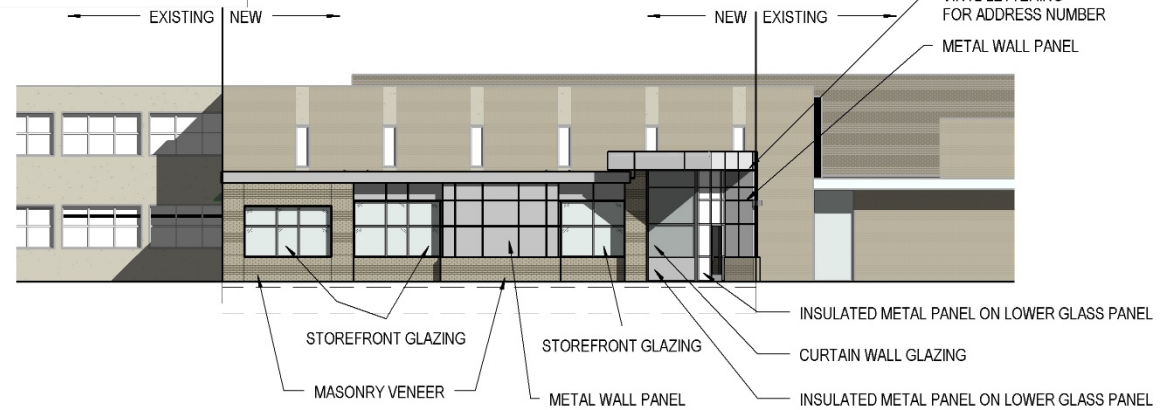
FRONT ENTRY



EAST ELEVATION



WEST ELEVATION



SOUTH ELEVATION



BRODY MIDDLE SCHOOL
 2501 Park Avenue, Des Moines, IA 50321



Project Highlights

- Improved entrance to school through the office.
- Upgrade for Library to improve options for students.
- Improved office support spaces.

Timeline and Budget

- December 8, 2015 – Board review and approval of final plans
- June 2016 – Construction start
- August 2016 – Completion

Project budget - \$1,000,000

Funding – Year 1 of SWP

QUESTIONS AND COMMENTS

Link to this presentation

<http://www.dmschools.org/departments/operations/construction/students-first/renovation-construction-plans/>



Think. Learn. **Grow.**

www.dmschools.org