



Brody Middle School

Additions and renovations

Final plans

January 17, 2012



BRODY MIDDLE SCHOOL
CLASSROOM ADDITION

SHIVEHATTERY
ARCHITECTURE+ENGINEERING

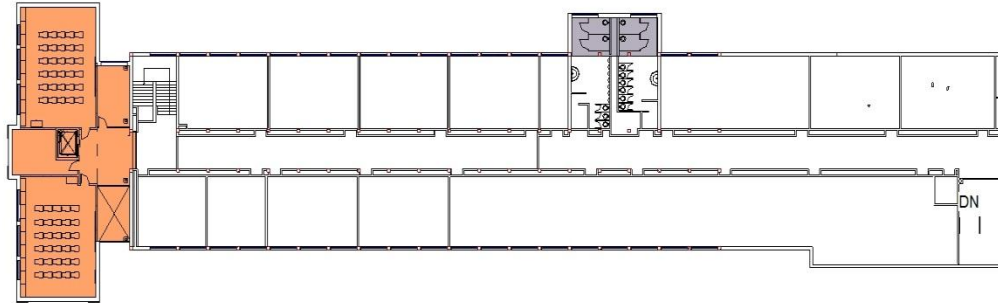
January 12,
2012



① SITE PLAN
1" = 60'-0"



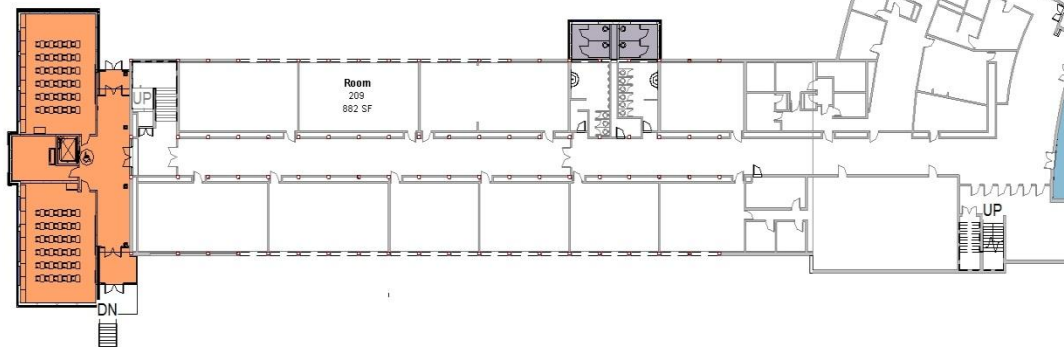
4 classroom addition



OVERALL SECOND FLOOR BUILDING
PLAN

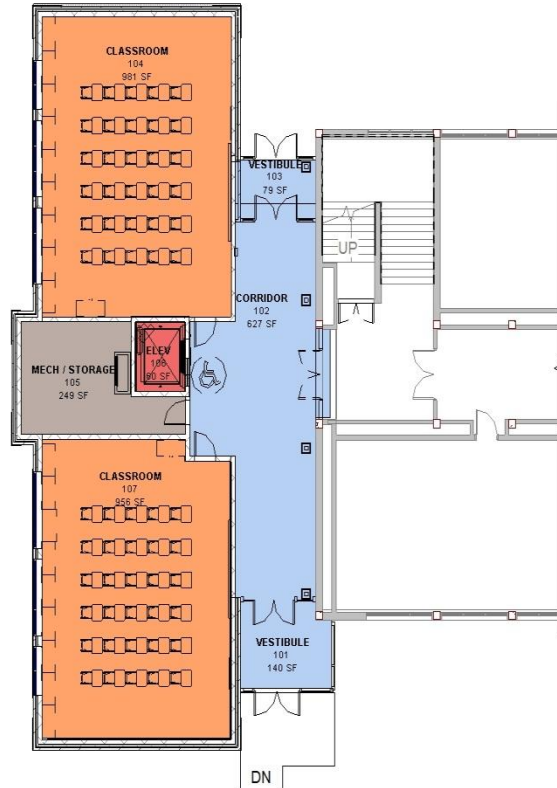
①
1" = 40'-0"

- NEW CR ADDITION
- RESTROOM ADDITION
- AUDITORIUM ADA MODIFICATIONS



OVERALL FIRST FLOOR BUILDING PLAN

②
1" = 40'-0"



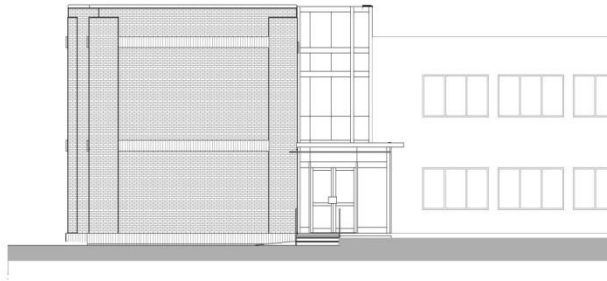
① FIRST FLOOR CLASSROOM ADDITION
1/16" = 1'-0"

FIRST FLOOR SF = 3,063 SF



② SECOND FLOOR CLASSROOM ADDITION
1/16" = 1'-0"

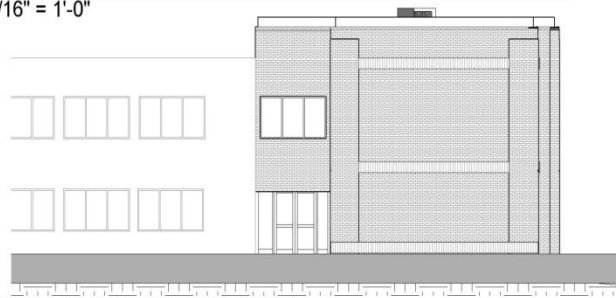
FIRST FLOOR SF = 2,876 SF



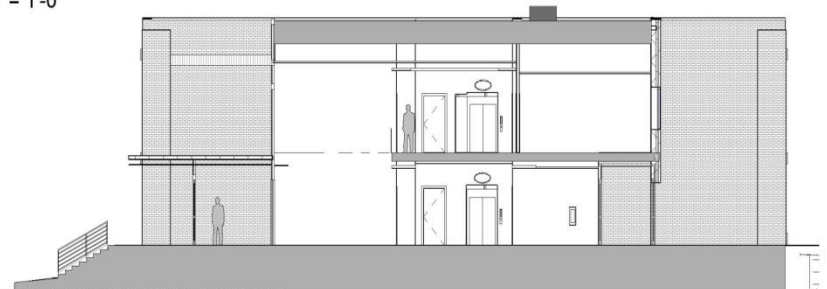
① SOUTH CLASSROOM ELEVATION
1/16" = 1'-0"



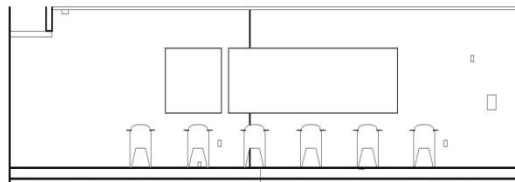
⑤ WEST CLASSROOM ELEVATION
1/16" = 1'-0"



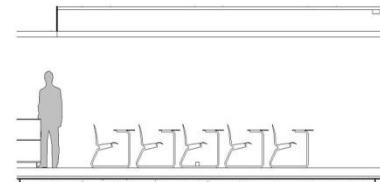
② NORTH CLASSROOM ELEVATION
1/16" = 1'-0"



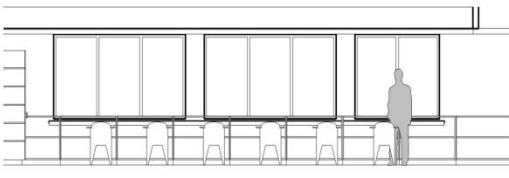
⑥ ENTRY - LONGITUDINAL SECTION
1/16" = 1'-0"



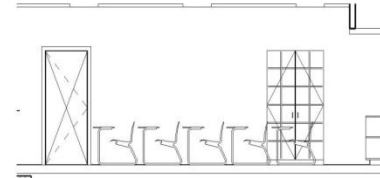
③ EAST - INTERIOR CLASSROOM
ELEVATION
1/8" = 1'-0"



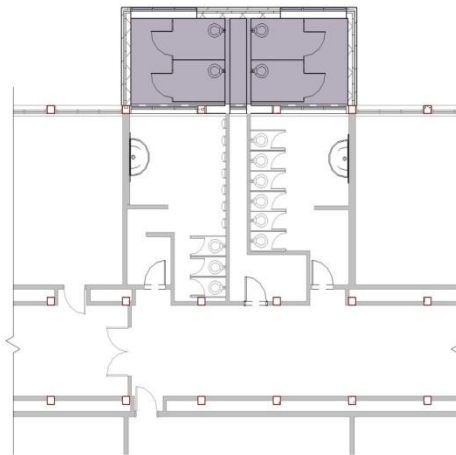
⑦ NORTH - INTERIOR CLASSROOM
ELEVATION
1/8" = 1'-0"



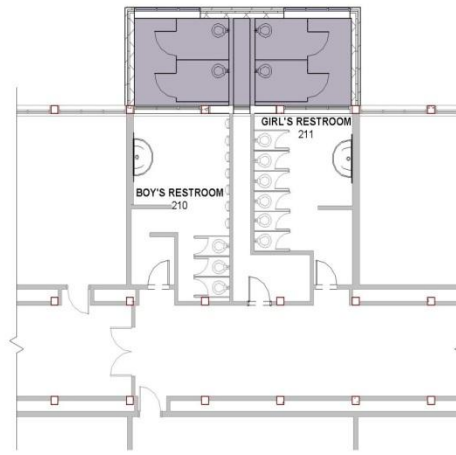
④ WEST - INTERIOR CLASSROOM
ELEVATION
1/8" = 1'-0"



⑧ SOUTH - INTERIOR CLASSROOM
ELEVATION
1/8" = 1'-0"



① FIRST FLOOR RESTROOM ADDITION
1/16" = 1'-0"

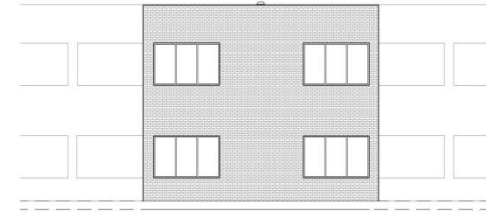


② SECOND FLOOR RESTROOM ADDITION.
1/16" = 1'-0"

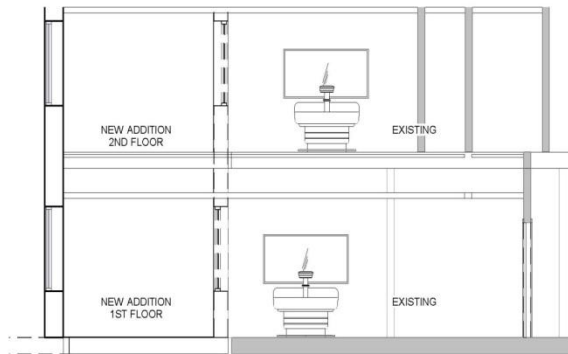
BRODY MIDDLE SCHOOL
CLASSROOM ADDITION



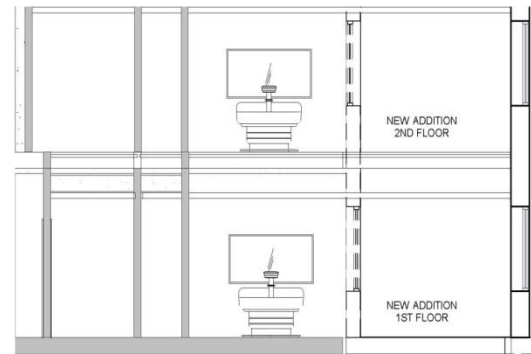
Des Moines
PUBLIC SCHOOLS



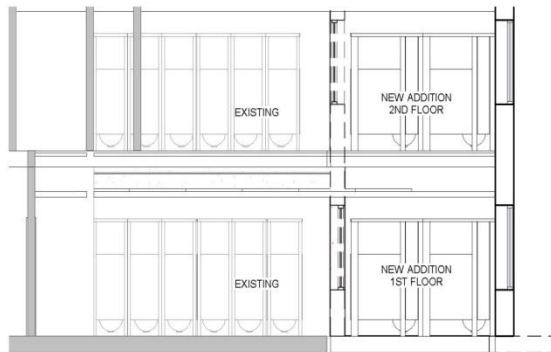
⑦ NORTH RESTROOM ADDITION
1/16" = 1'-0"



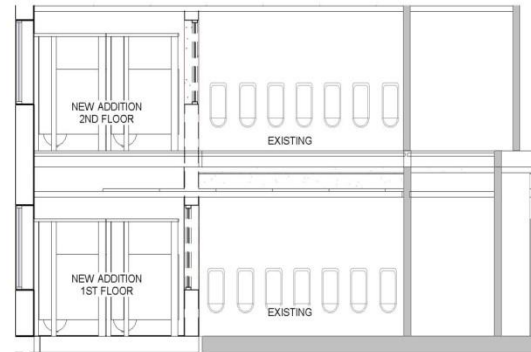
⑥ GIRL'S RESTROOM WEST
1/8" = 1'-0"



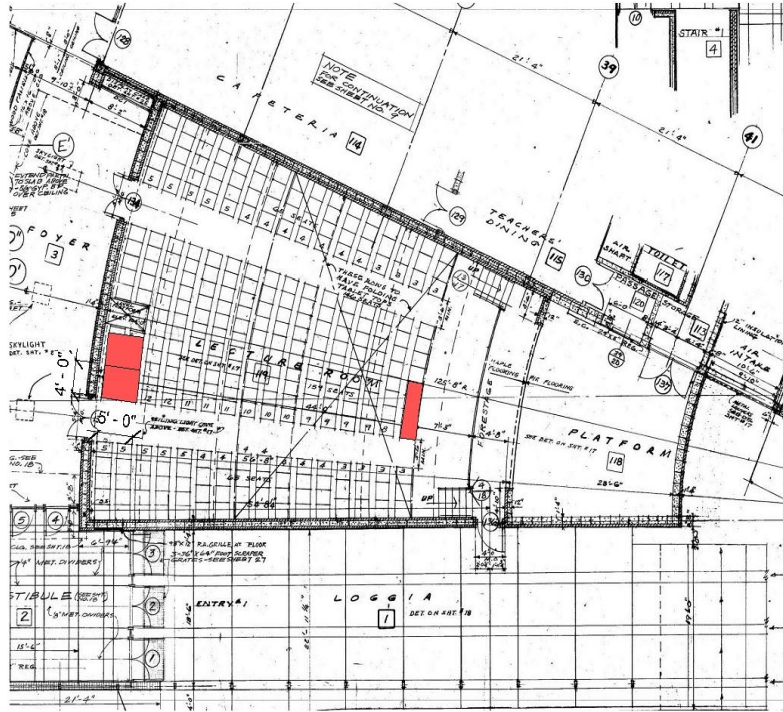
④ BOY'S RESTROOM WEST
1/8" = 1'-0"



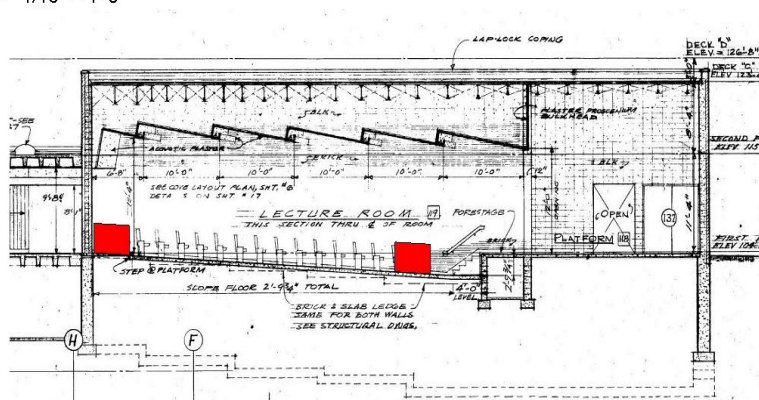
⑤ GIRL'S RESTROOM EAST
1/8" = 1'-0"



③ BOY'S RESTROOM EAST
1/8" = 1'-0"



① AUDITORIUM EXISTING FLOOR PLAN
1/16" = 1'-0"



② AUDITORIUM SECTION
1/16" = 1'-0"



③ IMAGE 1
1/2" = 1'-0"



⑤ IMAGE 2
1/2" = 1'-0"



⑥ IMAGE 4
1/2" = 1'-0"

289 EXISTING SEATS IN AUDITORIUM.

289x1% = 2.89 = 3 ACCESSIBLE SEATS NEEDED

Project Features

“Students First”

- Security and classroom environment improvements
 - Students would not have to leave the school for classes
- Energy savings
 - Inefficiency of mobiles versus classrooms tied to building
- ADA compliance
 - Elevator
 - Auditorium
 - Restrooms

Brody Project Budget

\$1,535,560

Five-year plan....Ten-year vision

Timeline

January 10, 2012 – Preliminary plans

January 17, 2012 – Board approval of final plans

March 13, 2012– Award of bids

April 2012 – Construction start

Fall 2012 - Completion